

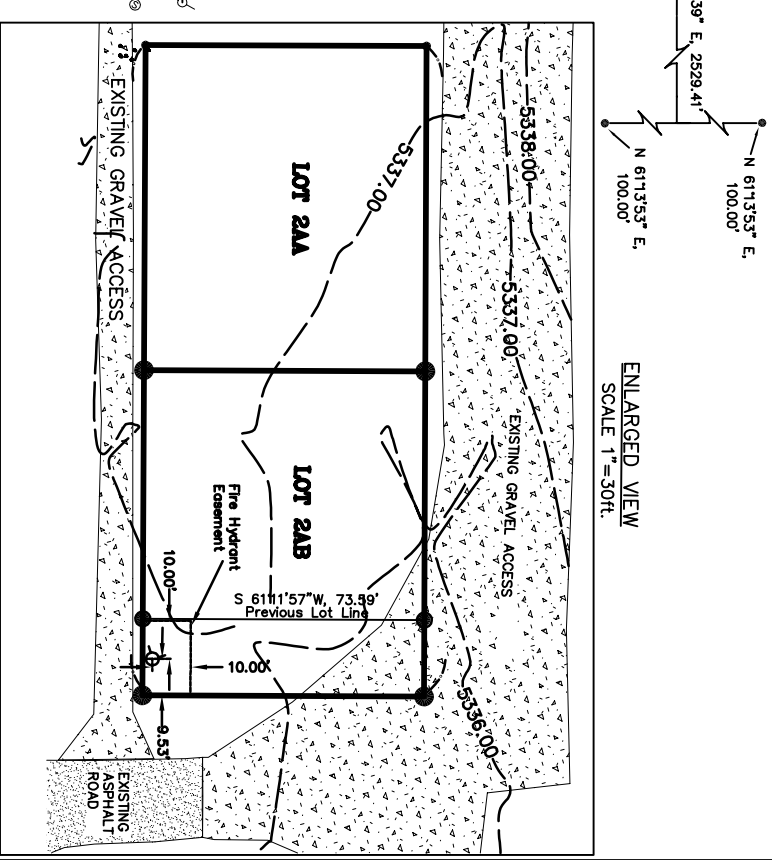
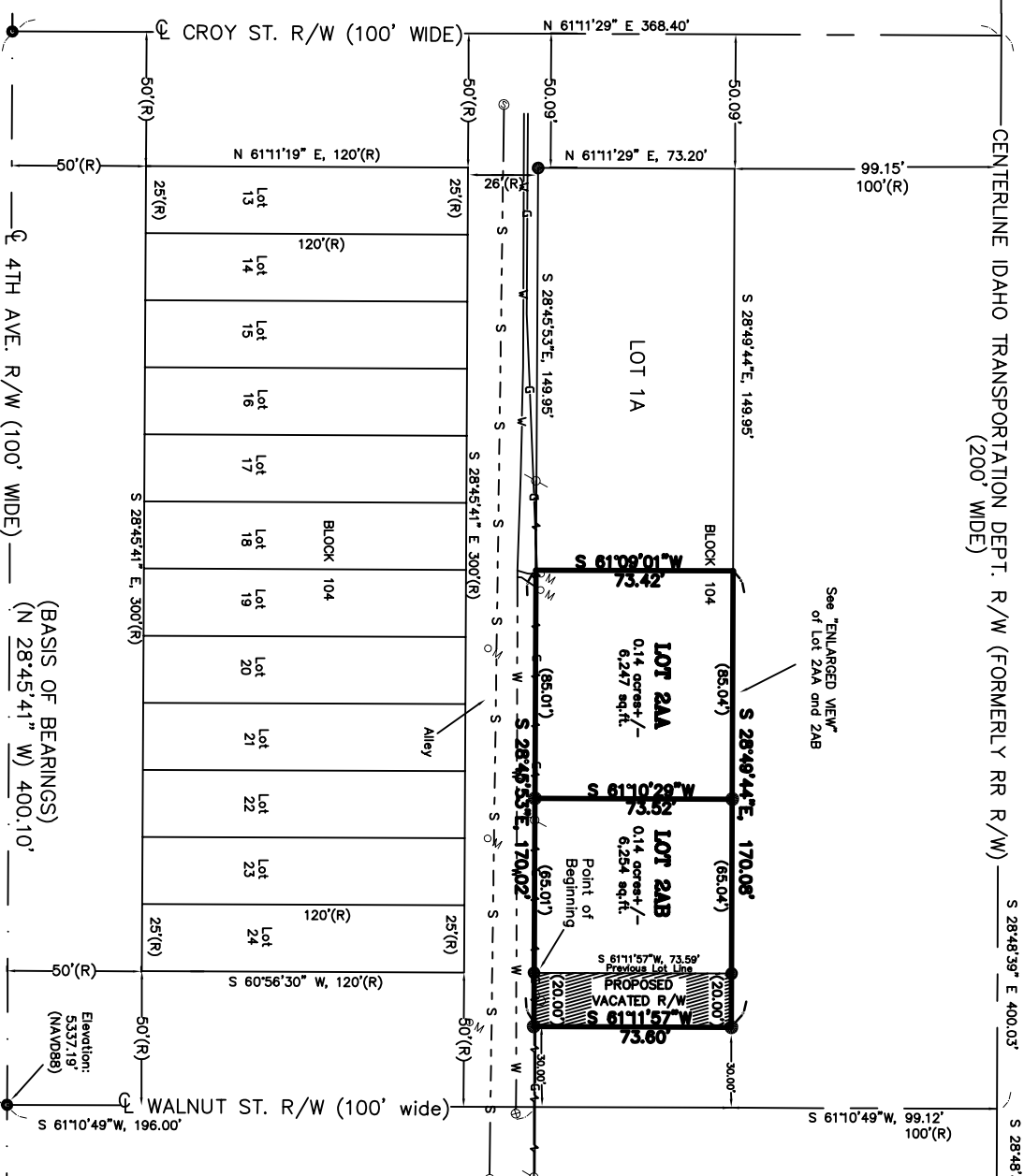
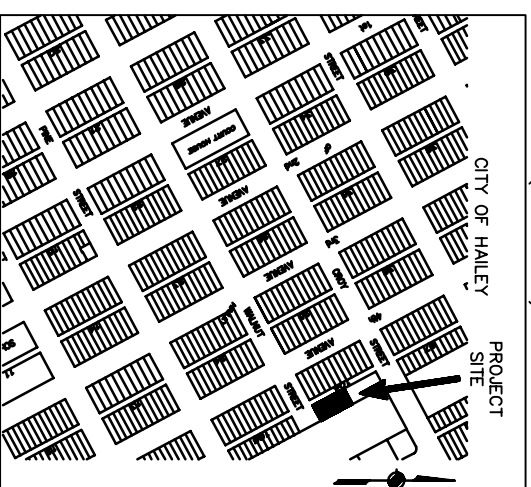
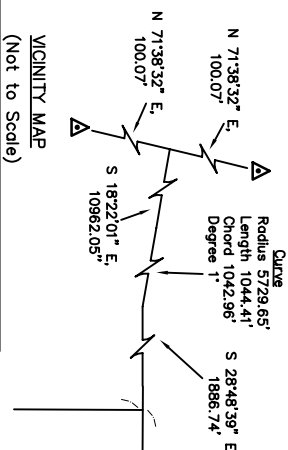
A PRELIMINARY PLAT SHOWING A REPLAT OF LOT 2A, BLOCK 104, HAILEY TOWNSITE

WHEREIN LOTS 2AA AND 2AB ARE CREATED AND THE SOUTHERLY LINE OF LOT 2AB IS
ADJUSTED TO INCLUDE A PORTION OF THE VACATED WALNUT ST. R/W

LOCATED WITHIN

SECTION 9, T.2 N., R.18 E., B.M., CITY OF HAILEY, BLAINE COUNTY, IDAHO

JUNE 29, 2008
NOT TO SCALE
SCALE IN FEET



- ### LEGEND
- Found Aluminum Cap
 - Found 5/8" Rebar, P.L.S. 792
 - Found 1/2" Rebar, P.L.S. 792
 - 5/8" Rebar with cap, P.L.S. 13004 (To Be Set)
 - ▲ Found Aluminum I.T.D. R/W Cap
 - (R) Denotes Record Distance
 - W --- Underground City Water Line (approximate)
 - S --- Underground City Sewer line (approximate)
 - G --- Underground Gas Line
 - Overhead Power Line
 - Fire Hydrant
 - ⊙ Sanitary Sewer Manhole
 - Power Pole
 - Water Meter
 - ⊙ OM
 - ⊙ Water Valve
 - Property Line - Lot 2AA and 2AB

HEALTH CERTIFICATE: Sanitary restrictions as required by Idaho Code Title 50, Ch. 13, have been satisfied. Sanitary restrictions may be reimposed in accordance with Idaho Code Title 50, Ch. 13, Sec. 50-1326, by issuance of a Certificate of disapproval.

Date _____

South Central Public Health District Dept., EHS

GREGORY L. HARBESON, P.L.S. 13004

NOTES

1. Letters of Acceptance for the Vacation of the portion of Walnut Street R/W, as shown hereon, have been requested from the following utility providers:
 - City of Hailey (Water and Waste Water)
 - Idaho Power Company
 - Cox Communications
 - Qwest Telecommunications
 - Syringa Networks
 - Internountain Gas
2. A current title policy was not provided by the client. There may be recorded instruments which could affect the use of this property.
3. This survey found evidence of access use, as shown hereon, prescriptive rights may be accruing.
4. Lots 2AA and 2AB as shown hereon are zoned LR-1 based on current City of Hailey zoning map.
5. The contours as shown hereon are based on elevation 5337.19' (N.A.V.D.88') on found aluminum cap at intersection of Walnut Street and 4TH Avenue right-of-ways.
6. At the time of this survey Lots 2AA and 2AB were unimproved
7. The 200' Wide Idaho Transportation Department's (I.T.D.) R/W, as shown hereon, is based on I.T.D. project plans Q-F-2392, dated April 1989.
8. Block 104 and the centerlines right-of-ways, Croy St., Walnut St., and 4th Ave. as shown hereon are based on the Map of Hailey, compiled by the Bureau of Highways, dated 1936 and on file in the Blaine County Clerk and Recorder's Office.
9. The Fire Hydrant Easement as shown hereon is proposed and will be dedicated to the City of Hailey upon the recording of the final plat.

REPLAT LOT 2A, BLOCK 104, HAILEY TOWNSITE

GALENA ENGINEERING, INC.
KETCHUM, IDAHO

SHEET 1 OF 2