

**CITY OF HAILEY**  
**RESOLUTION NO. 2020 - 24**

**A RESOLUTION OF THE CITY COUNCIL OF HAILEY, IDAHO, REPLACING THE COMPREHENSIVE PLAN LAND USE MAP WITH ATTACHMENTS 1A AND 1B, AND AMENDING SECTION 5, LAND USE AS SHOWN ON ATTACHMENT 2**

WHEREAS, the City of Hailey is currently undertaking Area of City Impact (ACI) negotiations with Blaine County pursuant to Idaho Code 67-6526, which includes updates to the 1994 Hailey/Blaine County ACI Map; and

WHEREAS, Idaho Code 67-6508 imposes a duty to adopt a Comprehensive Plan together with maps, having considered previous and existing conditions, trends, compatibility of land uses, desirable goals and objectives, or desirable future situations for each planning component; and

WHEREAS, the 2010 Comprehensive Plan Land Use Map includes the 1994 ACI boundary; and

WHEREAS, the City wishes to include the amended ACI Map on the Comprehensive Plan Land Use Map to be compatible with the contemplated updates to the Hailey/Blaine County ACI Map; and

WHEREAS, the City wishes to amend text in Section 5, Land Use related to ACI, and to adopt those amendments in accordance with Idaho Code Section 67-6508; and


WHEREAS, Idaho Code 67-6509(c) states that no plan shall be effective unless adopted by resolution of the governing board.

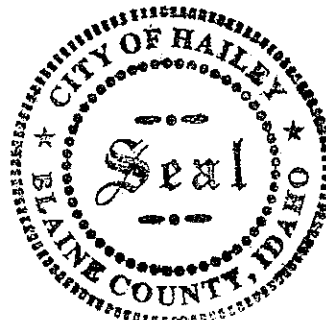
**NOW, THEREFORE, BE IT RESOLVED BY THE CITY COUNCIL AND THE MAYOR OF THE CITY OF HAILEY, IDAHO**, in accordance with Idaho Code 67-6508, that the 2010 Hailey Comprehensive Plan Land Use Map be repealed and replaced with Attachments 1A and 1B, 2020 Hailey Comprehensive Plan Land Use Map, and by Attachment 2, the addition and deletion of text in Section 5, Land Use, attached hereto, which is approved and adopted by the Hailey City Council.

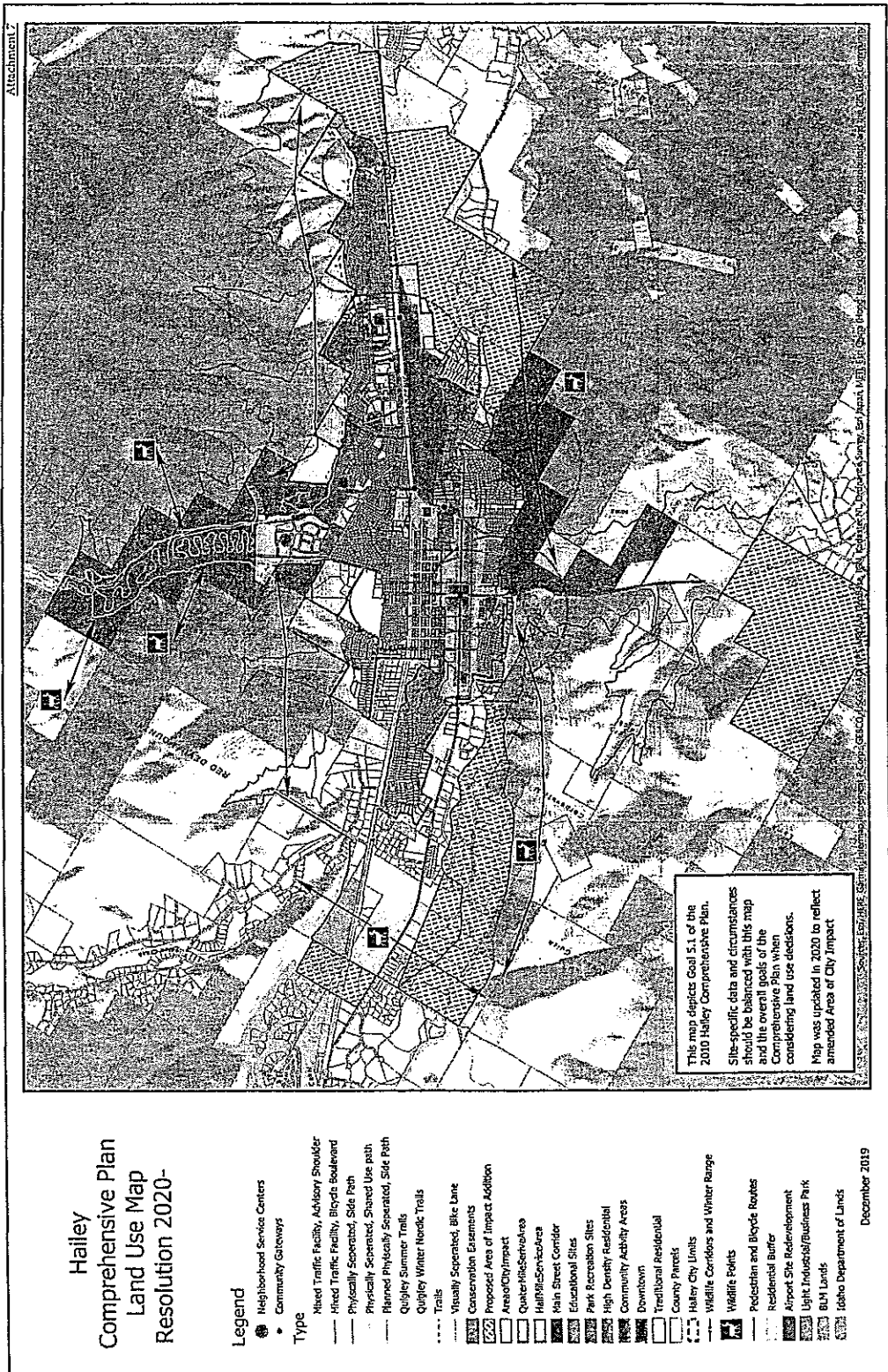
PASSED AND ADOPTED BY THE HAILEY CITY COUNCIL AND APPROVED BY THE MAYOR THIS 10<sup>th</sup> DAY OF February, 2020.

  
\_\_\_\_\_  
Martha Burke, Mayor

ATTEST:

  
\_\_\_\_\_  
Mary Cone, City Clerk





Attachment 2 to Hailey Resolution 2020-~~24~~<sup>29</sup>, changes to Comprehensive Plan Section 5,  
Land Use

Section 5. Land Use

Amount of Land Adjacent to Hailey for Annexation

There are 760 468 acres of un-platted, un-developed land within the 1994 ACI. Of that, only ~~266~~26 acres are adjacent to city limits; south of Colorado Gulch Subdivision and west of Airport West Subdivision. ~~(26 acres) and Quigley Canyon (240 acres). Only the mouth of Quigley Canyon (55 acres) is developed at city density (4+ U/A).~~ There are 515 \_\_\_ acres south of the current airport site proposed to be included in a 2020 Amended Area of City Impact agreement with Blaine County ~~(referred to as the Heritage Zone)~~. The community and city decision makers have expressed the desire to maintain open space between the City of Hailey and the City of Bellevue, and to respect airport safety needs in land use planning decisions. ~~The acreage for potential development in this area is further reduced if open space between Hailey and Bellevue is maintained. The total land available for annexation based on this information is 781 acres. It is reasonable to assume that some of this land will be left as open space and not all of it will be developed at city level densities (e.g. only the 55 acres at the mouth of Quigley Canyon).~~ Open Space and density levels will be an important consideration in the evaluation of annexation applications.

Exhibit A: Hailey Area of City Impact Map

