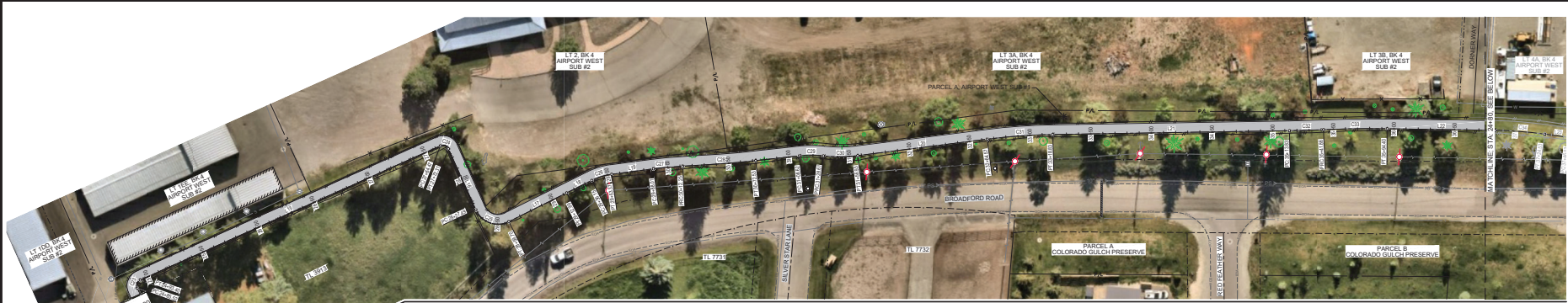




PLEASE DO NOT SCALE DRAWINGS. These drawings are for informational purposes only and should not be used for construction. All work shall conform to applicable codes and standards.



BIKE PATH PLAN (STA: 24+80 to STA: 36+80)

Line Table					Curve Table					Curve Table				
Line	Length	Direction	Start Station	Start Easting	Curve	Radius	Length	Delta	Chord Direction	Chord Length	Start Station	Start Northing	Start Easting	
L14	160.00'	N 60° 34' 30" E	23+24.58	671,291.060	C23	5.00'	7.88'	90° 19' 12"	S 74° 10' 54" E	7.09'	24+85.02	671,370.124	1,559,861.168	
L15	271.00'	S 29° 06' 18" E	24+03.45	671,368.201	C24	5.00'	7.85'	89° 54' 34"	S 15° 02' 59" W	7.07'	27+64.47	671,131.366	1,559,969.842	
L16	55.18'	S 60° 48' 18" W	27+72.31	671,134.970	C25	30.00'	32.20'	92° 10' 31"	S 14° 40' 30" W	28.84'	29+27.49	671,097.684	1,559,949.743	
L17	53.30'	S 31° 27' 18" E	28+59.70	671,098.768	C26	52.00'	17.21'	181° 57' 54"	S 21° 58' 19" E	17.13'	29+36.15	671,034.535	1,559,923.335	
L18	23.16'	S 31° 27' 18" E	29+12.89	671,024.294	C27	292.00'	24.24'	4° 45' 19"	S 10° 00' 42" E	24.23'	29+88.01	670,954.620	1,559,966.238	
L19	34.60'	S 12° 29' 22" E	29+63.27	670,988.546	C28	1008.00'	60.29'	3° 25' 36"	S 09° 20' 51" E	60.28'	30+12.25	670,930.968	1,560,000.492	
L20	107.64'	S 12° 14' 13" E	31+66.83	670,786.100	C29	92.00'	19.99'	12° 28' 51"	S 04° 58' 13" E	19.95'	31+08.62	670,836.162	1,560,017.371	
L21	195.00'	S 05° 03' 02" E	33+18.83	670,679.323	C30	120.00'	26.32'	13° 31' 25"	S 05° 28' 39" E	26.28'	31+28.61	670,816.225	1,560,019.988	
L22	89.22'	S 04° 10' 09" E	35+54.40	670,392.323	C31	402.00'	54.26'	8° 19' 09"	S 09° 04' 58" E	54.24'	32+64.57	670,682.929	1,560,044.190	
L23	21.51'	S 02° 57' 15" W	37+24.93	670,275.434	C32	1008.00'	28.02'	1° 38' 39"	S 08° 42' 51" E	28.02'	35+13.83	670,438.289	1,560,073.229	
L24	78.98'	S 04° 44' 47" W	39+16.92	670,038.559	C33	901.00'	52.54'	3° 20' 29"	S 05° 50' 24" E	52.54'	35+41.86	670,407.957	1,560,076.925	
L25	166.10'	S 00° 03' 42" E	40+24.14	669,926.936	C34	329.00'	40.90'	7° 07' 29"	S 00° 36' 27" E	40.88'	36+83.62	670,266.309	1,560,088.307	
L26	79.96'	S 00° 02' 02" E	42+49.71	669,791.411	C35	408.00'	100.71'	14° 08' 32"	S 04° 07' 01" E	100.45'	37+46.03	670,203.955	1,560,087.692	
L27	14.01'	S 19° 56' 40" E	44+96.26	669,477.024	C36	92.00'	41.90'	26° 07' 39"	S 01° 52' 32" W	41.59'	38+46.74	670,103.763	1,560,094.904	
L28	6.31'	S 61° 53' 49" W	47+48.31	669,246.210	C37	92.00'	17.82'	11° 09' 50"	S 20° 29' 17" W	17.79'	38+88.69	670,092.196	1,560,093.542	



BIKE PATH PLAN (STA: 36+80 to STA: 47+54.62)

**BROADFORD ROAD BIKE PATH  
GEOMETRY PLAN (STA: 24+80 to STA: 47+54.62)**  
LOCATED WITHIN SECTIONS 15 & 16, T.2N. R.16E. B.M., CITY OF HALEY, BLAINE COUNTY, DAHO  
PROJECT INFORMATION  
DRAWN BY: J. HALEY  
CHECKED BY: J. HALEY  
DATE: 08/20/2024

**PRELIMINARY  
NOT FOR  
CONSTRUCTION**

DESIGNED BY: CT  
DRAWN BY: CT  
CHECKED BY: JCL  
SURVEY DATE:

**GALNA - BENCHMARK  
ENGINEERING**  
1000 8th Ave  
Bozeman, MT 59717  
406.592.8340  
www.galna-benchmark.com

NO.	DATE	BY	REVISIONS

C1.10