

Bullion Pathway Concept Refinement | Community Input

March 2025





Introduction

CONNECT DOWNTOWN TO PARKS & TRAILS

Create a multi-use path connecting Main Street to Hop Porter and Lions Parks.

IMPROVE SAFETY ALONG BULLION CORRIDOR

Provide a buffered path and designated crossings for cyclists and pedestrians traveling along Bullion Street.

INCREASE PLACEMAKING, BEAUTY & COMFORT

Contribute to the attractiveness, sense of place, and walkability of the corridor.

PROVIDE ENVIRONMENTAL BENEFIT

Expand roadway plantings that increase carbon sequestration, pollinator habitat, and heat island mitigation.

REDUCE DEPENDENCY ON VEHICULAR TRANSIT

Provide safe, convenient, and attractive routes for human-powered transit, making it easy to get around without a car.

DESIGN COST-EFFECTIVE SOLUTION

Specify a design that takes a responsible approach to the construction and maintenance costs of the streetscape.

BULLION STREET GOALS

This set of goals have been identified for the Bullion Street Enhancements project. These goals were developed from a review of public input, existing planning documents, and current conditions. The goals are not ranked in order of importance.



BULLION STREET PROMENADE CONCEPT DESIGN

The Bullion Street Promenade is envisioned as a way to improve the safety and comfort of accessing destinations along the corridor while also creating a celebrated connection between Downtown and the area’s abundant parks and greenspaces. The promenade is conceived as a designated multi-use pathway separated from the roadway and buffered with plantings along its half-mile length. The project aims to increase the safety and attractiveness of traveling along Bullion Street and make it easier for residents and visitors to enjoy all Hailey has to offer.



Tree-lined Pedestrian Promenade

LEGEND

- Parcel Boundary
- Parks
- Wood River Land Trust Parcels
- Vehicular Access
- Pedestrian Access



**BULLION STREET
PROMENADE**
CONCEPT SITE PLAN

PHASE 1 A & B

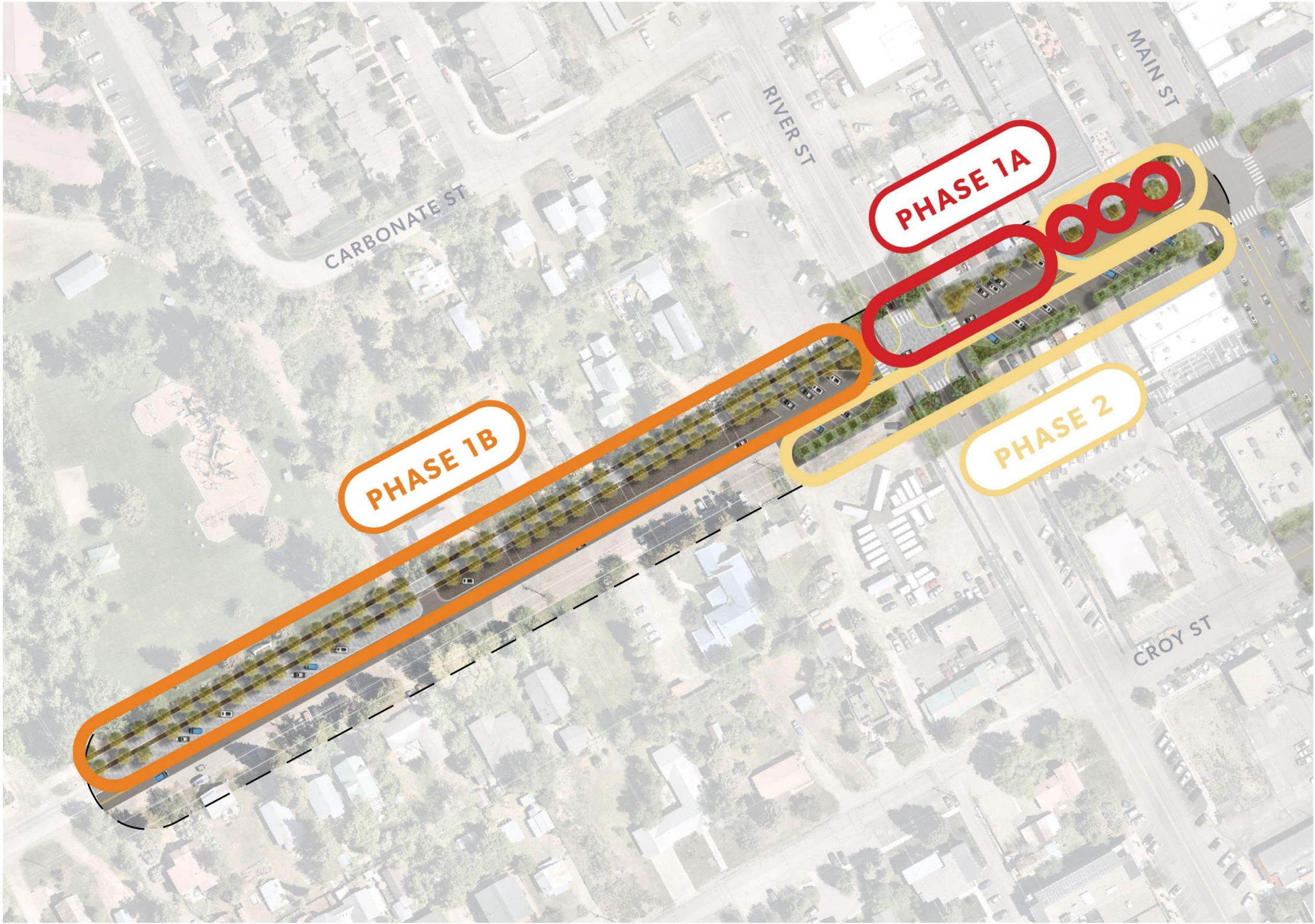
4 blocks from Main to Hop Porter Park,
north side of the street only, with only
partial improvements on the eastern half of
the block from River to Main.

Project Budget:
\$2,300,000



**BULLION STREET
PROMENADE
CONCEPT SITE PLAN**

The Bullion Street Promenade runs along the north side of Bullion Street from Main Street to Lions Park. The first phases of implementation aim to install the promenade from Main Street to Hop Porter Park, shown in the concept site plan here. The promenade takes the form of a 12’-wide, multi-use path lined on both sides with planters featuring Japanese Tree Lilacs and understory plantings. The ADA-compliant path is designed to accommodate human-powered transit of all kinds — bikers, walkers, runners, and rollers — making it easy for Hailey residents to get around without a vehicle. The promenade will also provide a useful connection to Downtown for festival and event attendees at Lions and Hop Porter Parks, encouraging visitors to wander Downtown and support local businesses. The path promises to become a signature feature of Hailey’s Downtown and a critical link between Downtown and the area’s natural and recreational amenities.



**BULLION STREET
PROMENADE
CONCEPT SITE PLAN**

PHASE 1A \$450K
1 block between River and Main;
Full implementation from River
Street intersection to alley, tactical
implementation from alley to Main Street.

PHASE 1B \$1.85M
3 blocks from River Street to Hop Porter
Park, north side of the street only.

PHASE 2 \$2M
1.5 blocks from Main to beyond River,
south side of street; new roadway Main to
River; complete implementation on N side
of block from Main to alley.

What we heard

Develop a process for more input to guide refinement of the plan and elements

Loosen up the layout and character – more informal, natural

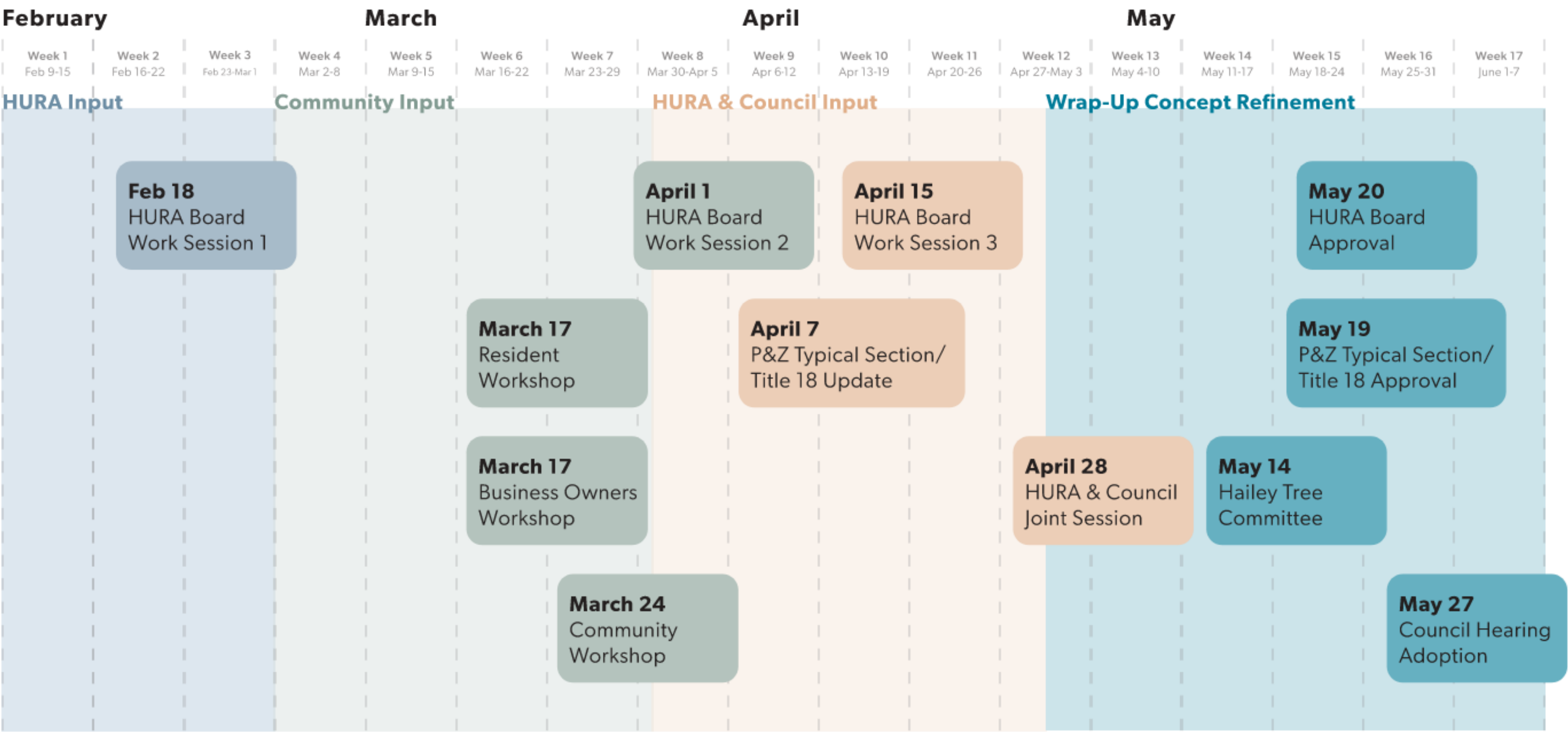
Re-evaluate Tree Lilacs, consider other options, more diversity

Emphasize regionally appropriate, water wise trees and planting

Create something distinctive, welcoming and signature Hailey

TIMELINE

2025



Q3 2025 or later

Bullion Pathway Phase 1A Construction

2026 or later

Bullion Pathway Phase 1B Construction

2027 or later

Bullion Pathway Phase 2 Construction

Bullion Pathway Basics

What's it for?

A safe and enjoyable way for families to walk or bike to Hop Porter Park and out Croy Canyon

Who is it for?

Locals, shoppers, park user's, concert goers, bikers, walkers, strollers, all ages

What's it made of?

Pavers, art, lights, trees, planting, benches and pedestrian amenities

How will it be used?

Mostly for walkers to River Street, then for bikers, walkers and strollers. The pathway will be cleared of snow in the winter from Main to Hop Porter Park.

When will it be completed?

Initial phases will be completed by the end of 2026

How will it be maintained?

Maintenance of this project is very important and the pathway will be treated within the 'high priority' category for maintenance.



Guiding Vision

PLACEMAKING

The Bullion Pathway is intended to represent Hailey's culture and environment, be a destination, and a pleasant, comfortable draw for locals to walk and bike along to Hop Porter Park for events, to the Big Wood River, and out to the trails in Croy Canyon.

A guiding **Vision** or **Theme** elevates the experience of a place while providing a cohesive direction for the various project elements – including the paving, light fixtures, benches, planting, art and wayfinding.



Big Wood River



Hailey's Quirky Culture



City of Trees



Carbonate Mt & Croy Canyon

Big Wood River

The Bullion Pathway leads directly to the Big Wood River, natural wonder and recreational respite for Hailey residents. The Big Wood is characterized by large trees, fall color, a layered understory and its organic, meandering form.

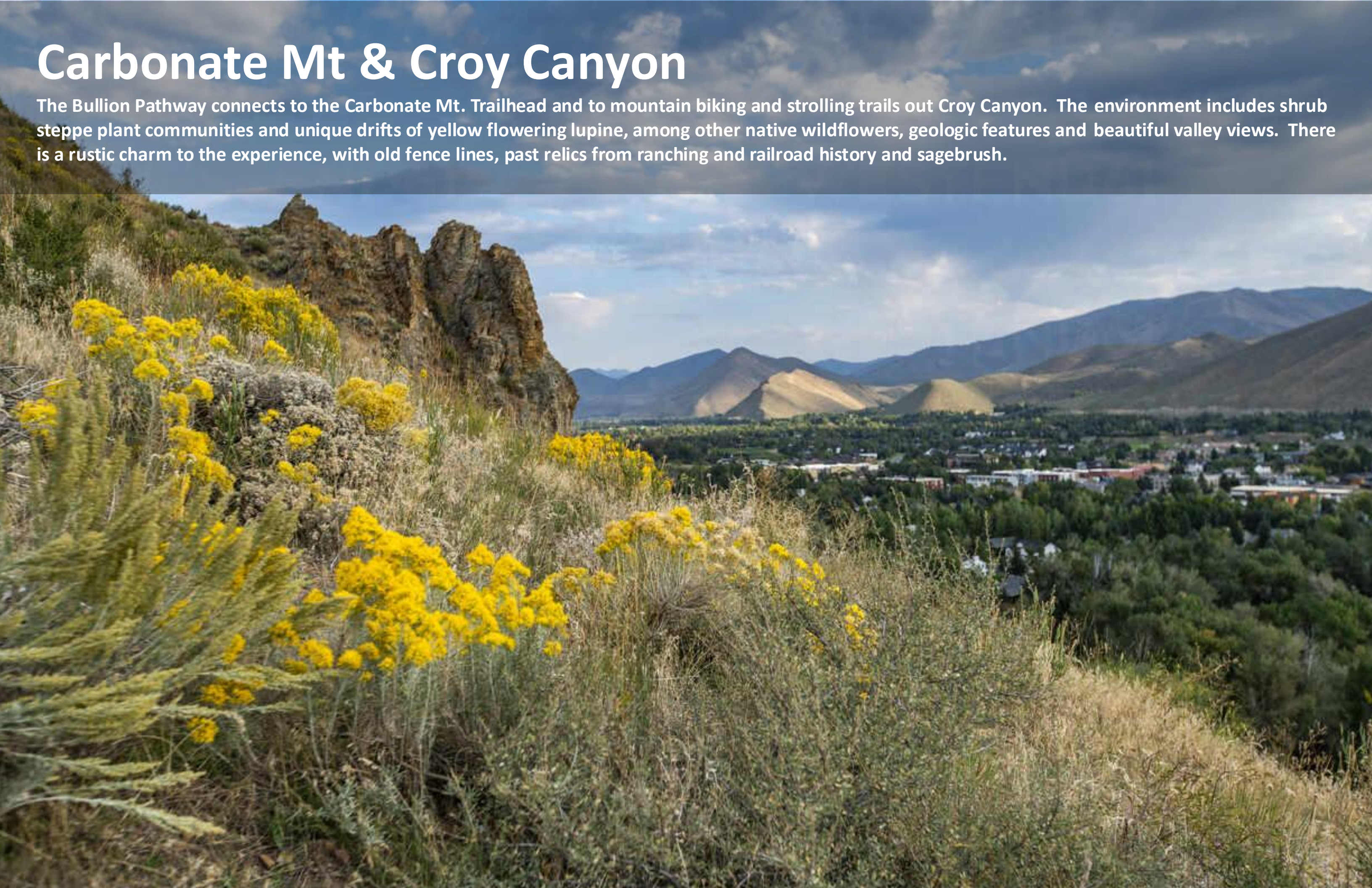


Big Wood River



Carbonate Mt & Croy Canyon

The Bullion Pathway connects to the Carbonate Mt. Trailhead and to mountain biking and strolling trails out Croy Canyon. The environment includes shrub steppe plant communities and unique drifts of yellow flowering lupine, among other native wildflowers, geologic features and beautiful valley views. There is a rustic charm to the experience, with old fence lines, past relics from ranching and railroad history and sagebrush.



Carbonate Mt & Croy Canyon



City of Trees

Hailey is known as a City of Trees, with an urban forest of hardwoods decades in the making. Fall is particularly spectacular with a profusion of bright reds and yellows from classic American shade trees, native aspen and cottonwood.



City of Trees



Hailey Quirky Culture

Hailey is a quirky culture, with seasonal festivals, parades and events, a love of music festivals and an eclectic, colorful and informal vibe to downtown. A classic mountain town with brew pubs, easy access to year-round recreation, and a western feel.



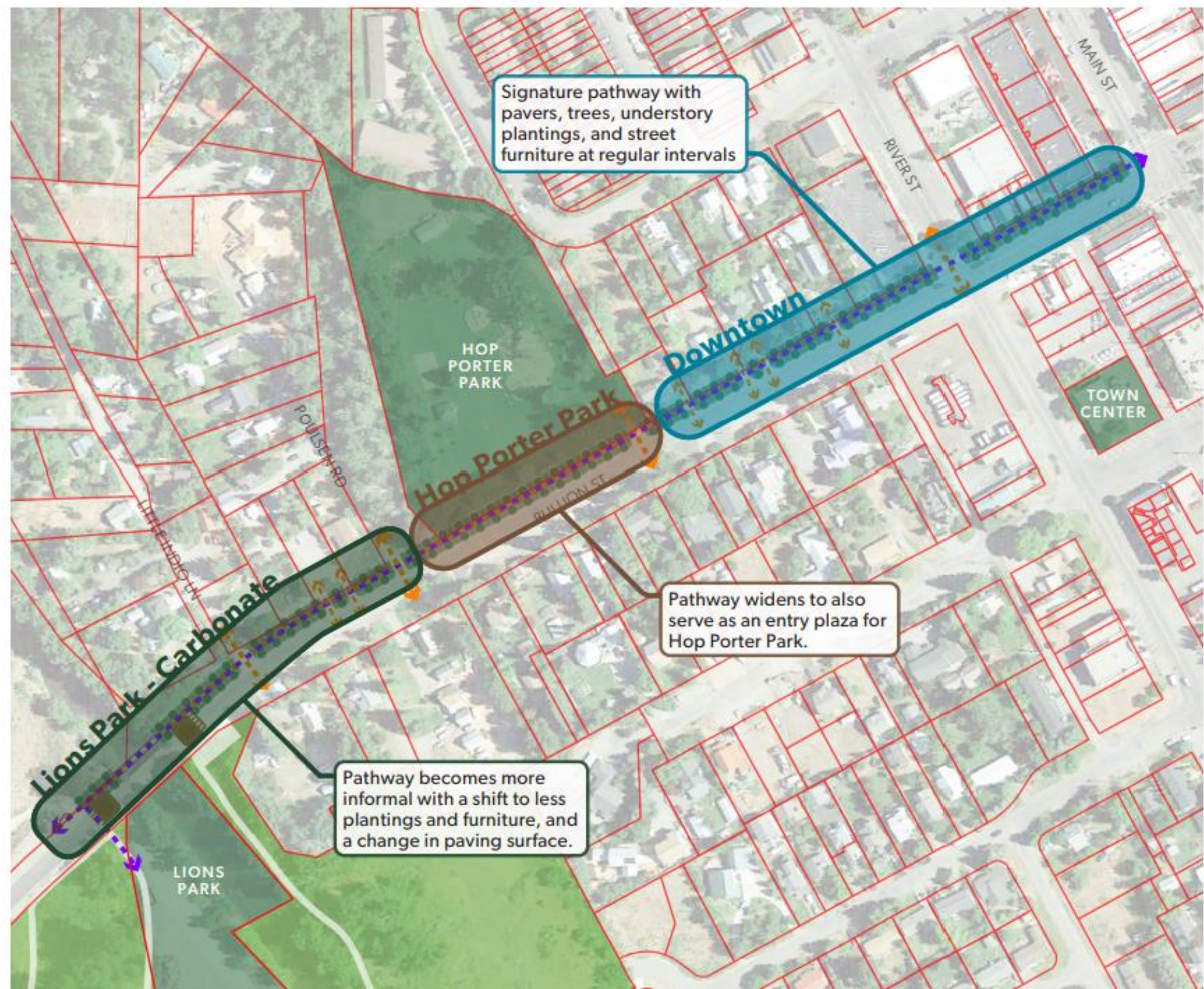
Hailey Quirky Culture



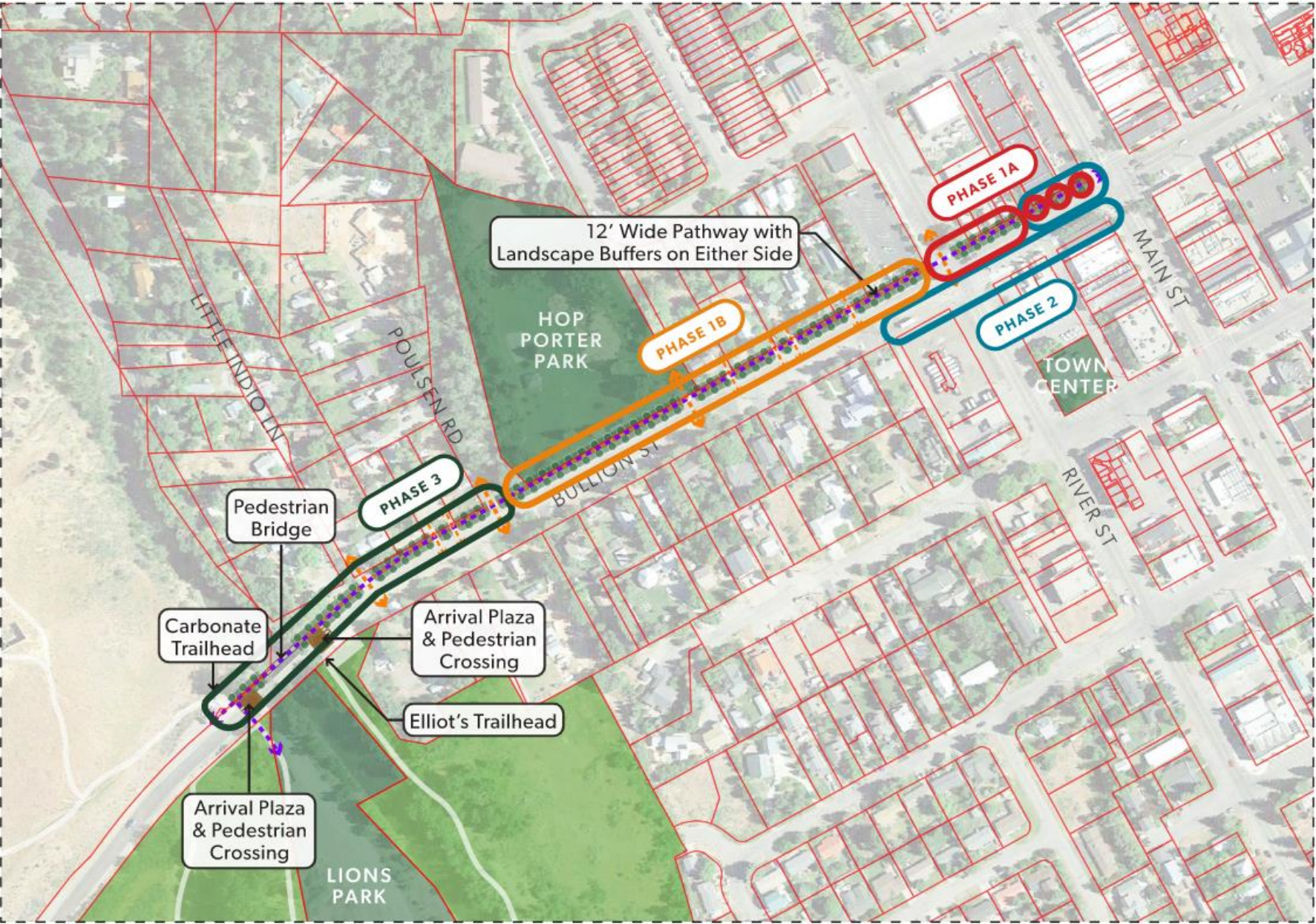


Pathway

PATHWAY TYPOLOGIES



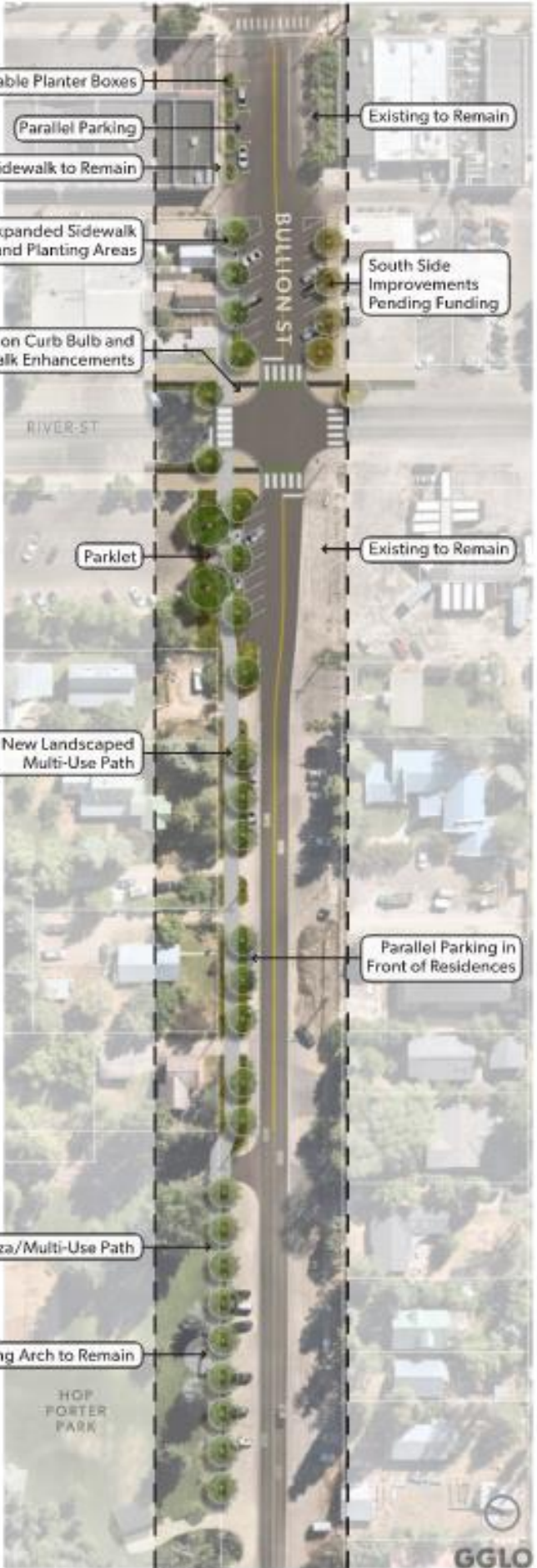
PHASING PLAN



EXISTING CONDITION



PHASE 1A & B



Bullion Pathway Update 3-24-25

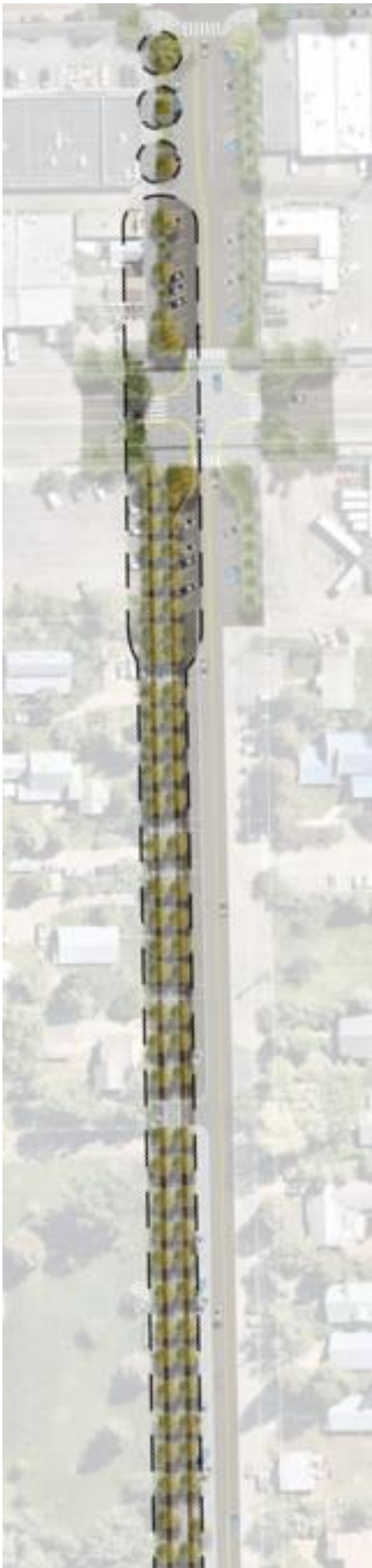
EXISTING CONDITION

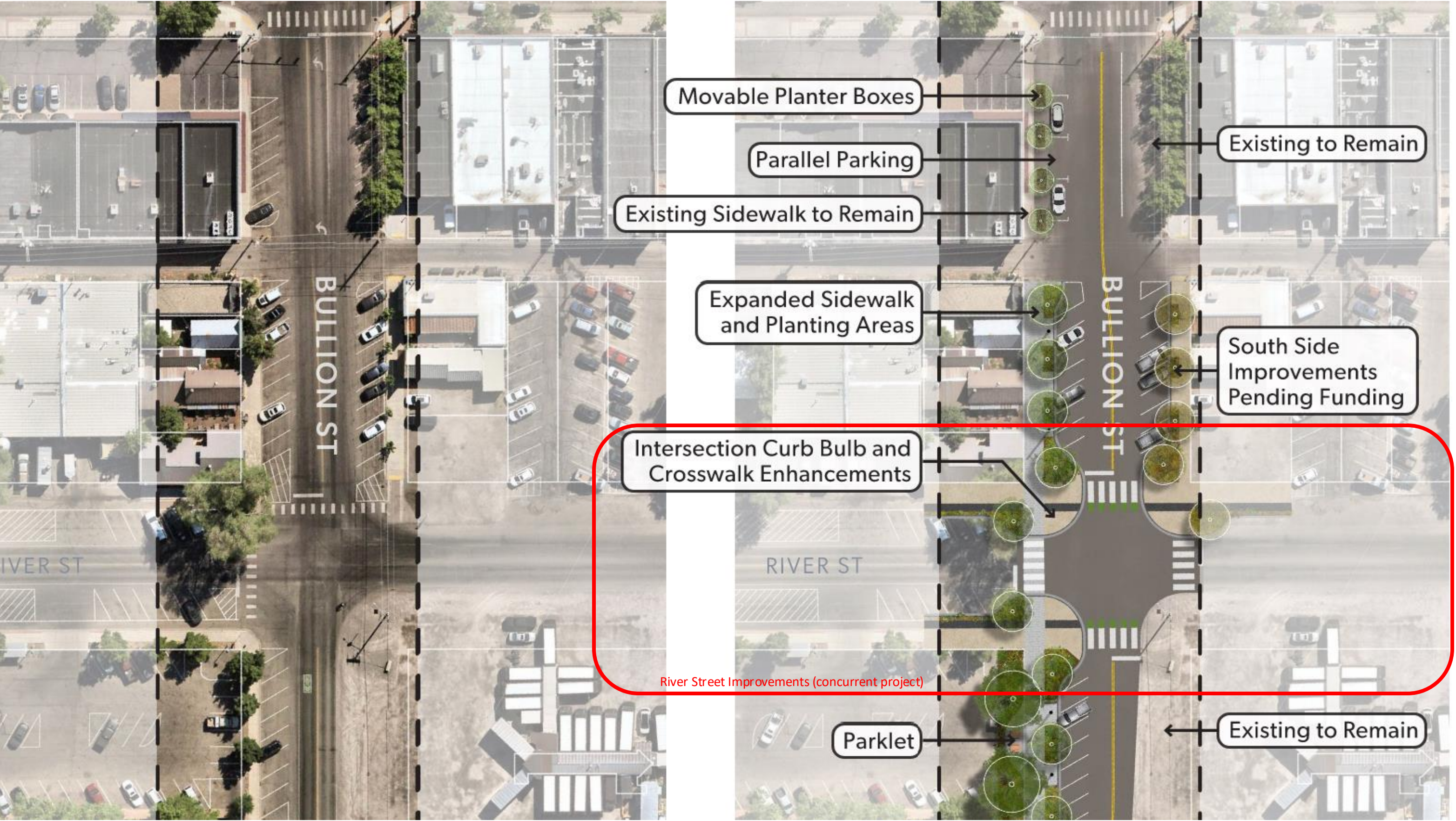


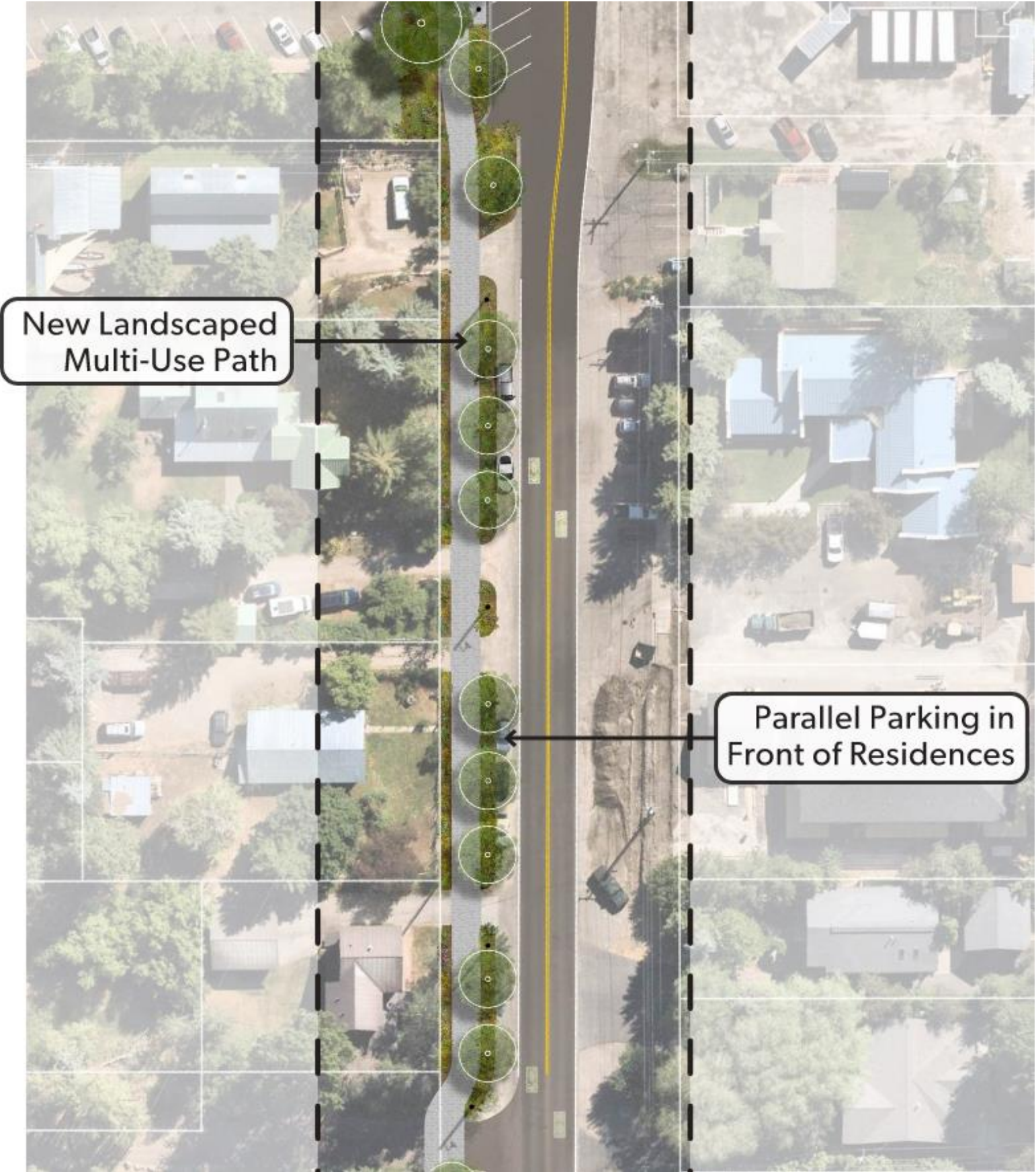
PHASE 1A & B



PRIOR PLAN

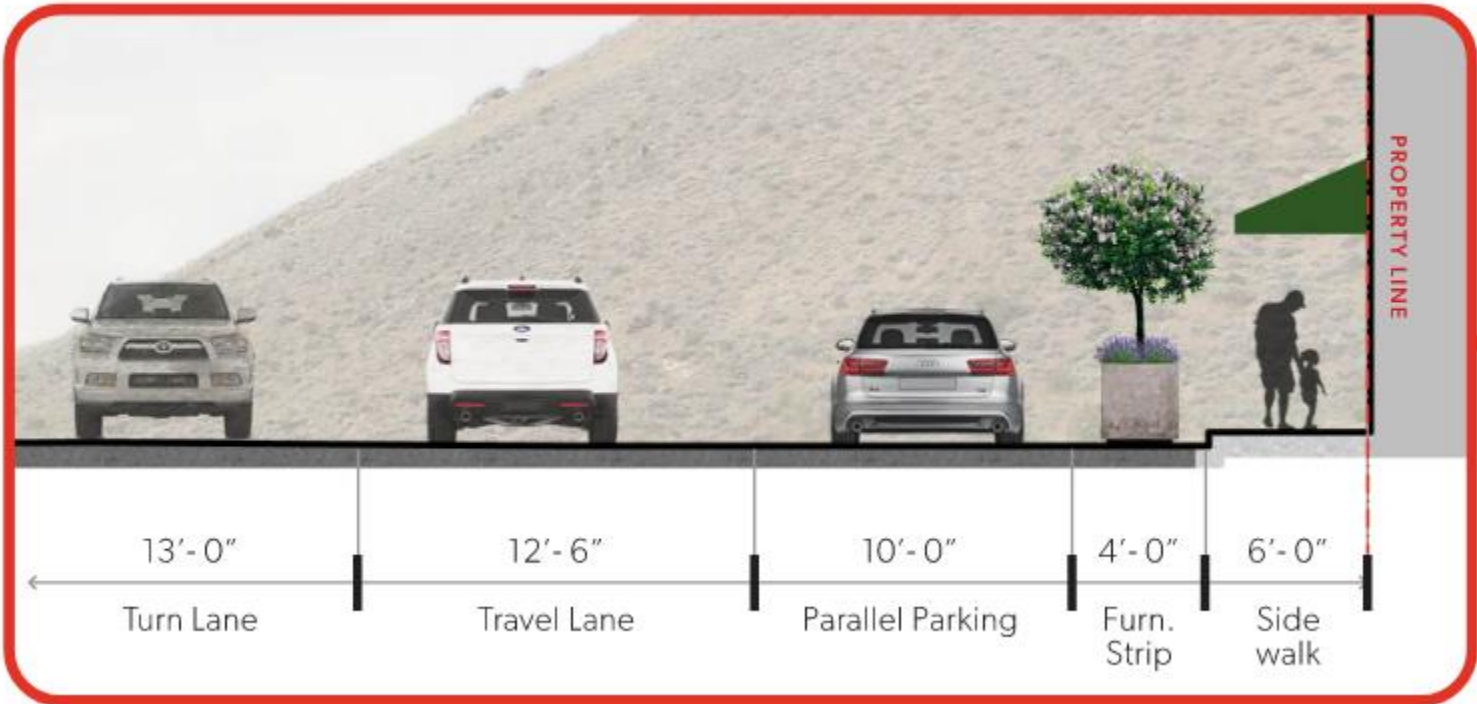




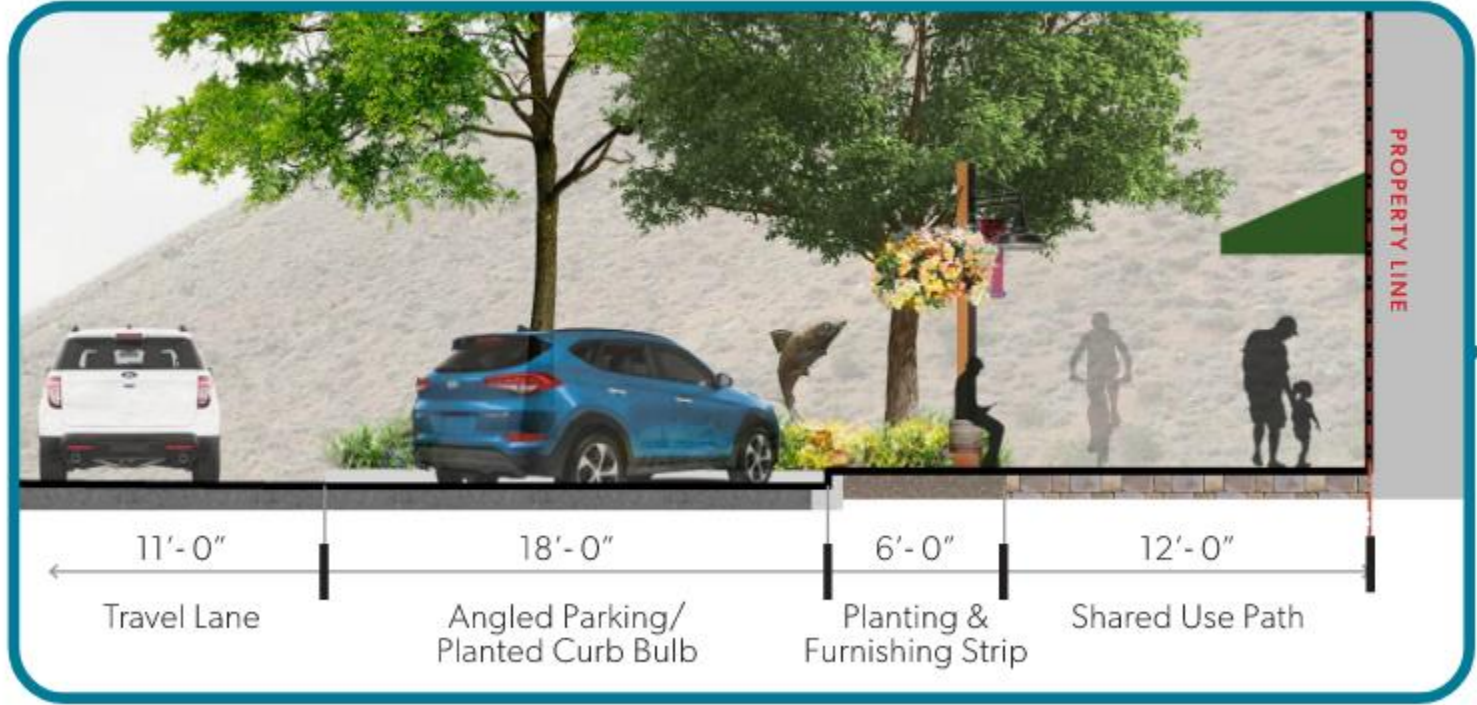




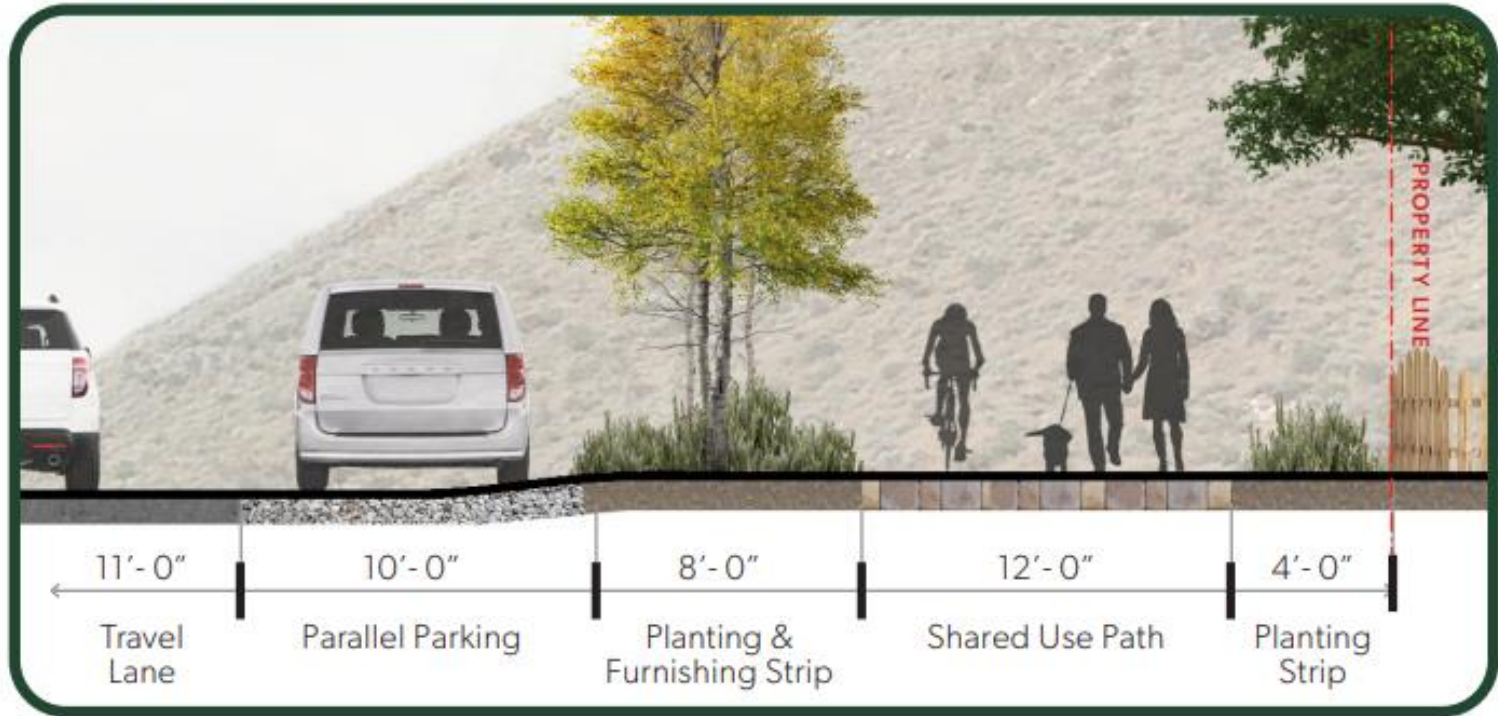
1 TACTICAL IMPROVEMENTS



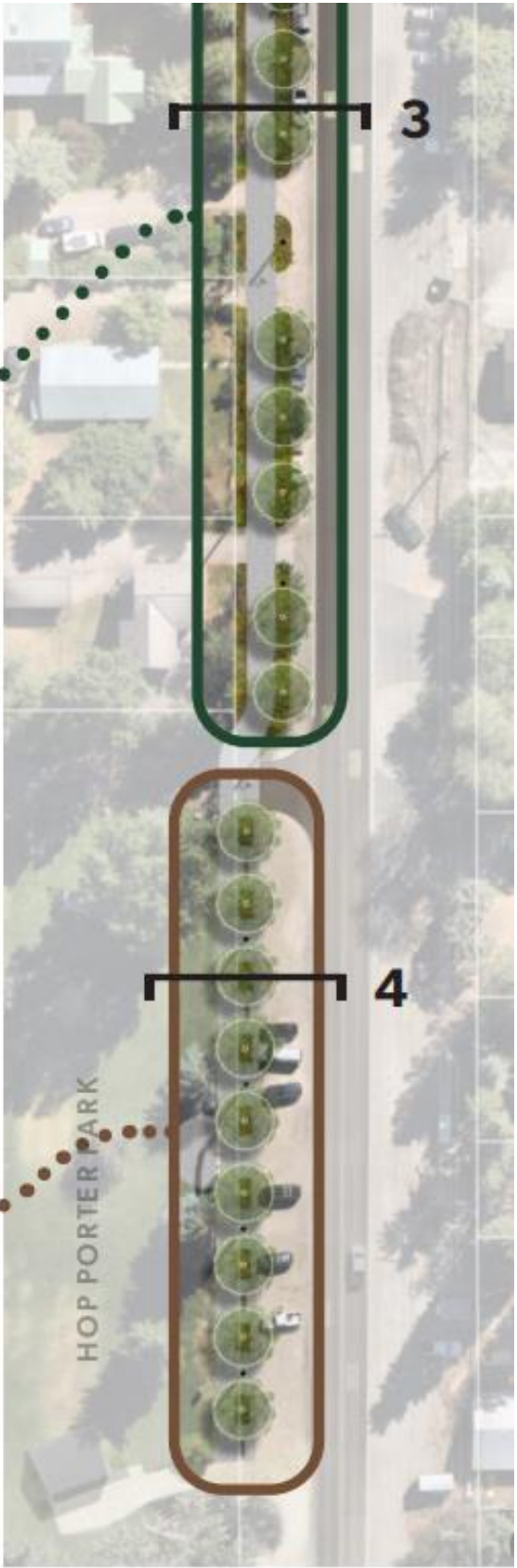
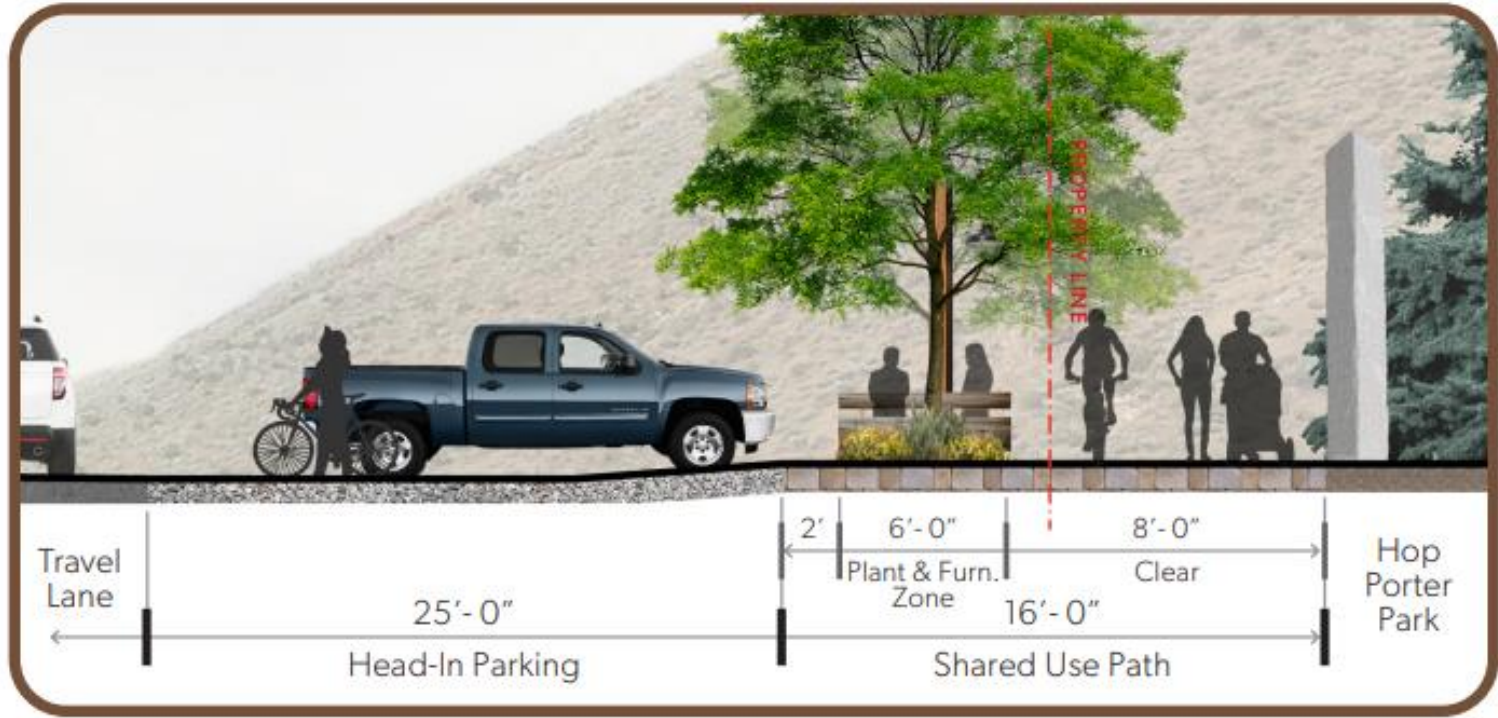
2 DOWNTOWN SECTION



3 RESIDENTIAL SECTION



4 HOP PORTER PARK SECTION





Pathway Components

FLOWERING TREES



PARK/PLAZA TREES



LARGE CANOPY TREES



FLOWERING TREES



Tree Lilac



Washington Hawthorn



Serviceberry (tree form)

PARK/PLAZA TREES



Silver Linden



Willow Oak

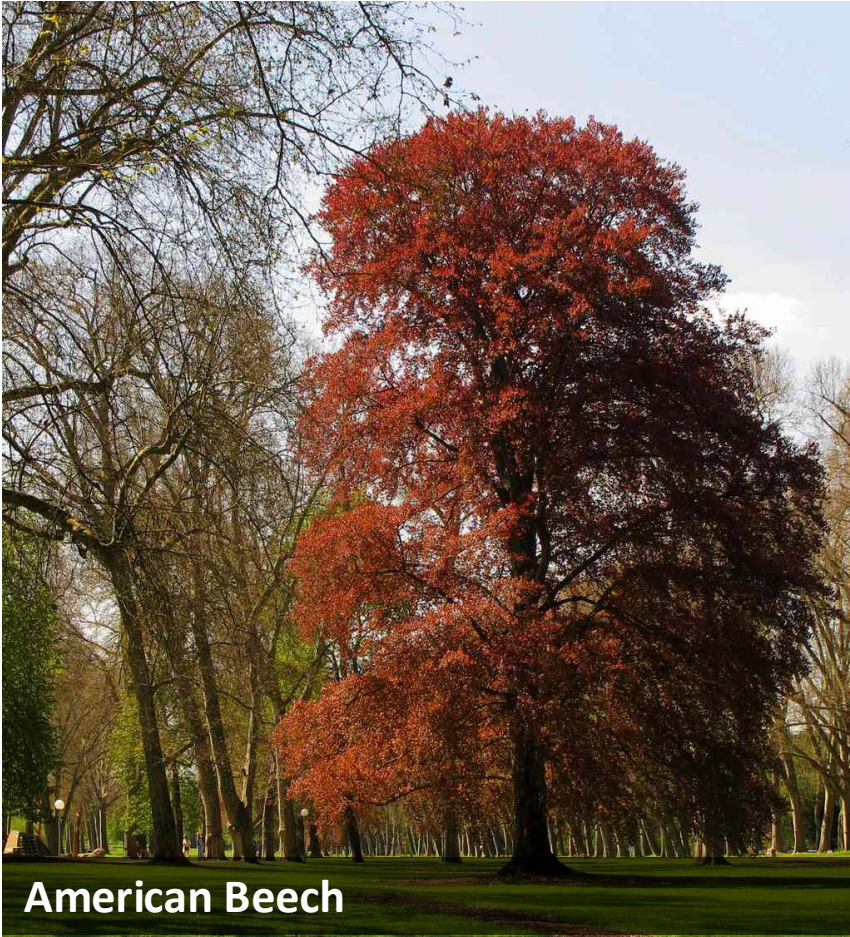
LARGE CANOPY TREES



London Plane Tree



American/Princeton Elm (disease resistant)



American Beech



White Pine (or conifers)

PLANTING



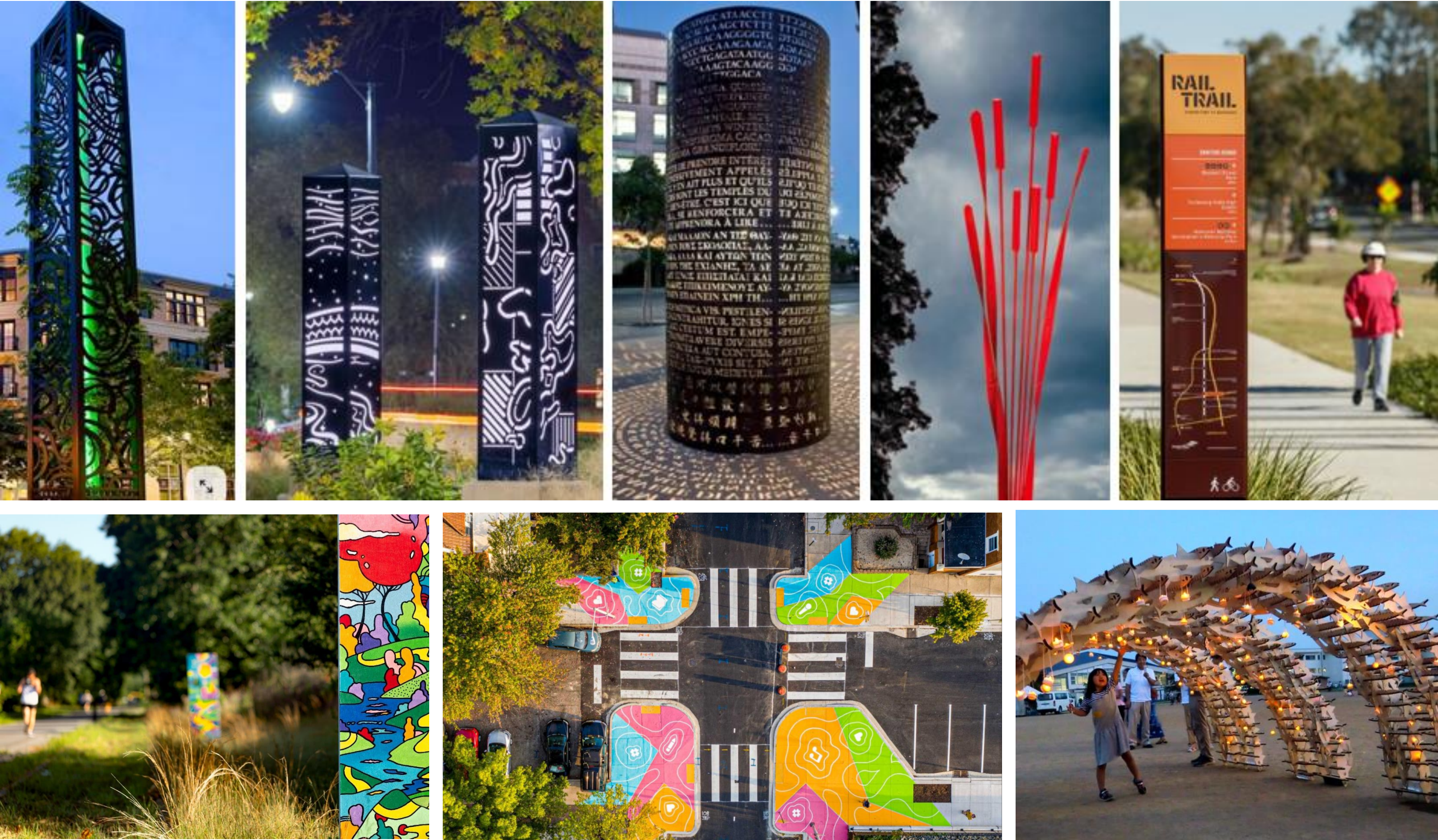
LIGHTING



PAVING, FURNISHINGS



ART



Bullion Pathway Concept Refinement | Art & Gateways



Bullion Pathway Concept Refinement | Community Input

March 2025

