



**HURA
BULLION PATHWAY
CONCEPT REFINEMENT**

Design Package
June 23, 2025

GGLO

SEATTLE | LOS ANGELES | BOISE

BULLION PATHWAY CONCEPT REFINEMENT

JUNE 23, 2025

Prepared by:

GGLO

On behalf of:

Hailey Urban Renewal Agency (HURA)
The City of Hailey

GGLO

113 S Fifth Street
Suite 200
Boise, ID 83702

City of Hailey

115 S. Main Street
Hailey, ID 83333

Note: all contents are concepts only and subject to future
detailed study and final design.

ACKNOWLEDGMENTS

Thank you to the City staff and community members
who contributed their ideas, insights, and expertise
to the thoughtful development of this plan.

HAILEY URBAN RENEWAL AGENCY (HURA)

Larry Schwartz, Chair
Sandi Viau, Vice Chair
Martha Burke, Member
Bob Brand, Member
Brian McCue, Member

CITY OF HAILEY

Martha Burke, Mayor
Lisa Horowitz, City Administrator
Brian Yeager, Public Works Director
Emily Williams, Sustainability and Grants Coordinator

CITY COUNCIL

Kaz Thea, President
Heidi Husbands, Member
Juan Martinez, Member
Dustin Stone, Member

HAILEY PLANNING & ZONING COMMISSION

Janet Fugate, Chair
Dan Smith, Vice Chair
Sage Sauerbrey, Member
Jordan Fitzgerald, Member
Michael Smith, Member

TABLE OF CONTENTS

INTRODUCTION

- 5 Goals
- 6 Concept Design
- 7 Pathway Typologies
- 8 Basics

COMMUNITY INPUT

- 10 Timeline
- 11 What we heard
- 12 Board Results

CONCEPT REFINEMENT

- 15 Guiding Vision: Big Wood River
- 17 Phasing Plan
- 18 Main to River Street
- 22 River Street to Hop Porter Park
- 26 Hop Porter Park
- 27 Typical Sections
- 30 Paving & Amenities
- 31 Planting
- 32 Trees
- 34 Budget

INTRODUCTION

CONNECT DOWNTOWN TO PARKS & TRAILS

Create a multi-use path connecting Main Street to Hop Porter and Lions Parks.

IMPROVE SAFETY ALONG BULLION CORRIDOR

Provide a buffered path and designated crossings for cyclists and pedestrians traveling along Bullion Street.

INCREASE PLACEMAKING, BEAUTY & COMFORT

Contribute to the attractiveness, sense of place, and walkability of the corridor.

PROVIDE ENVIRONMENTAL BENEFIT

Expand roadway plantings that increase carbon sequestration, pollinator habitat, and heat island mitigation.

REDUCE DEPENDENCY ON VEHICULAR TRANSIT

Provide safe, convenient, and attractive routes for human-powered transit, making it easy to get around without a car.

DESIGN COST-EFFECTIVE SOLUTION

Specify a design that takes a responsible approach to the construction and maintenance costs of the streetscape.

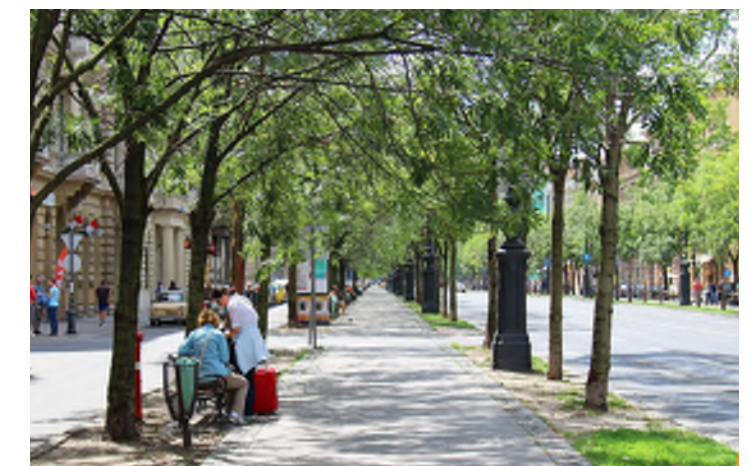
BULLION STREET GOALS

This set of goals have been identified for the Bullion Street Enhancements project. These goals were developed from a review of public input, existing planning documents, and current conditions. The goals are not ranked in order of importance.



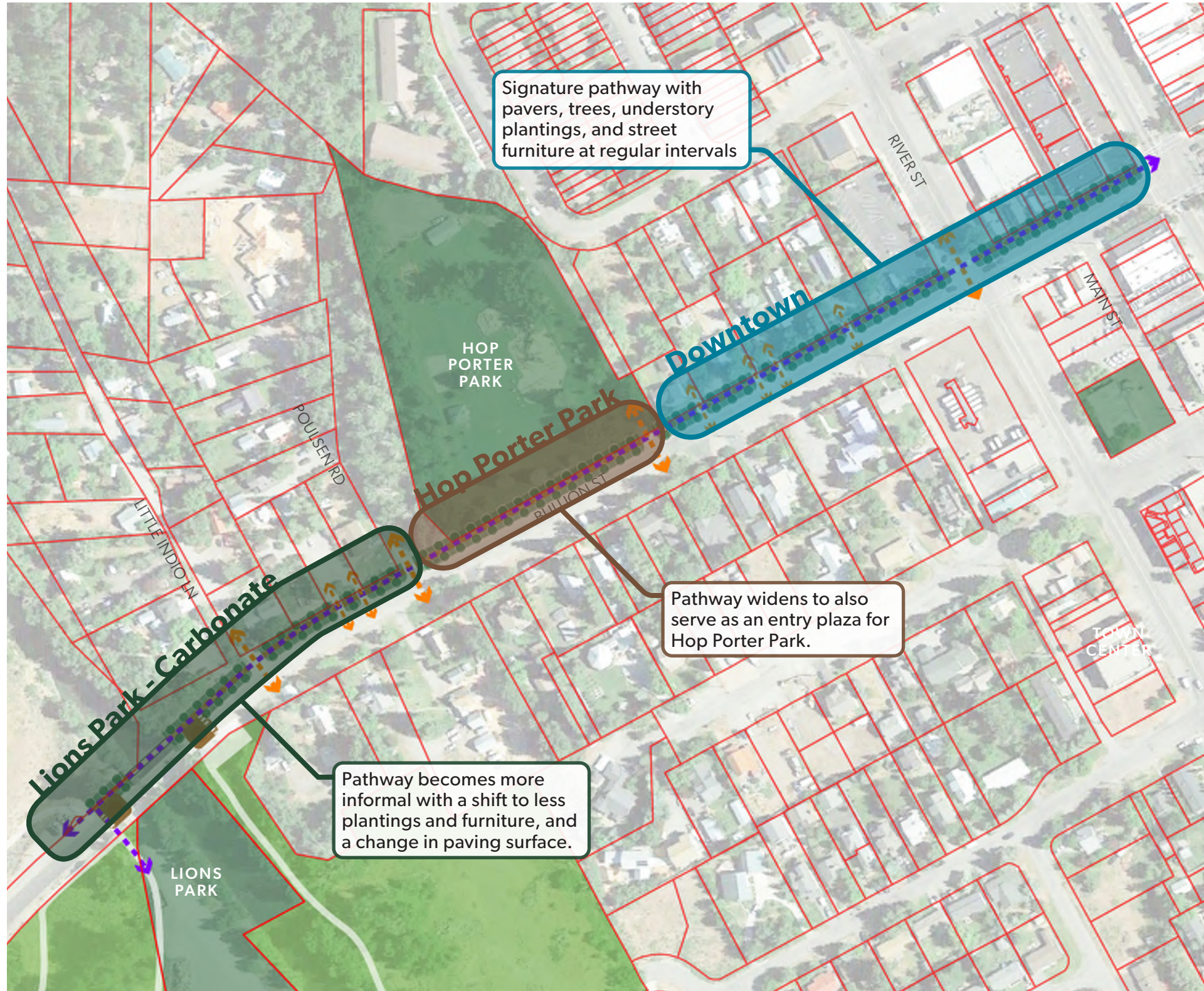
BULLION STREET PROMENADE CONCEPT DESIGN

The Bullion Street Promenade is envisioned as a way to improve the safety and comfort of accessing destinations along the corridor while also creating a celebrated connection between Downtown and the area's abundant parks and greenspaces. The promenade is conceived as a designated multi-use pathway separated from the roadway and buffered with plantings along its half-mile length. The project aims to increase the safety and attractiveness of traveling along Bullion Street and make it easier for residents and visitors to enjoy all Hailey has to offer.



Tree-lined Pedestrian Promenade

PATHWAY TYPOLOGIES



BULLION PATHWAY BASICS

What's it for?

A safe and enjoyable way for families to walk or bike to Hop Porter Park and out Croy Canyon

Who is it for?

Locals, shoppers, park user's, concert goers, bikers, walkers, strollers, all ages

What's it made of?

Pavers, art, lights, trees, planting, benches and pedestrian amenities

How will it be used?

Mostly for walkers to River Street, then for bikers, walkers and strollers. The pathway will be cleared of snow in the winter from Main to Hop Porter Park.

When will it be completed?

Initial phases will be completed by the end of 2026

How will it be maintained?

Maintenance of this project is very important and the pathway will be treated within the 'high priority' category for maintenance.

COMMUNITY INPUT

Project Timeline

2025

February

Week 1
Feb 9-15

Week 2
Feb 16-22

Week 3
Feb 23-Mar 1

HURA Input

Feb 18
HURA Board
Work Session 1

March

Week 4
Mar 2-8

Week 5
Mar 9-15

Week 6
Mar 16-22

Week 7
Mar 23-29

Community Input

March 17
Resident
Workshop

March 17
Business Owners
Workshop

March 24
Community
Workshop

April

Week 8
Mar 30-Apr 5

Week 9
Apr 6-12

Week 10
Apr 13-19

Week 11
Apr 20-26

HURA & Council Input

April 1
HURA Board
Work Session 2

April 7
P&Z Typical Section/
Title 18 Update

April 9
Hailey Tree
Committee

April 15
HURA Board
Work Session 3

May

Week 12
Apr 27-May 3

Week 13
May 4-10

Week 14
May 11-17

Week 15
May 18-24

Week 16
May 25-31

Week 17
June 1-7

Wrap-Up Concept Refinement

May 5
P&Z Typical Section
Title 18 Approval

May 20
HURA Board
Work Session 4

June 9
HURA & Council
Joint Session

June 10
HURA
Adoption

June 23
Council
Adoption

Q3 2025 or later

Bullion Pathway Phase 1A Construction

2026 or later

Bullion Pathway Phase 1B Construction

2027 or later

Bullion Pathway Phase 2 Construction

WHAT WE HEARD

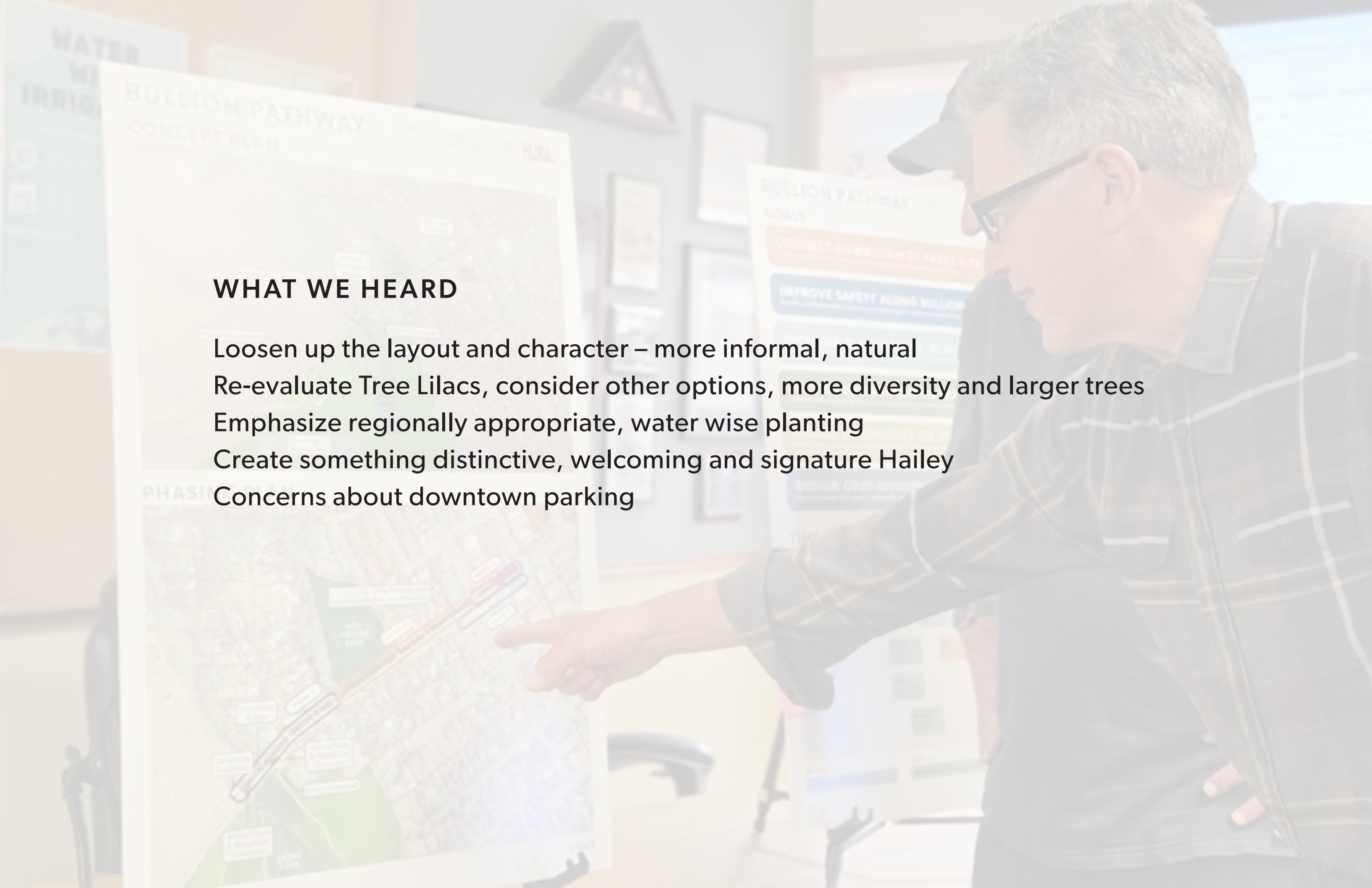
Loosen up the layout and character – more informal, natural

Re-evaluate Tree Lilacs, consider other options, more diversity and larger trees

Emphasize regionally appropriate, water wise planting

Create something distinctive, welcoming and signature Hailey

Concerns about downtown parking



BULLION PATHWAY PLACEMAKING THEMES

DOWNTOWN MASTER PLAN PHASE 1 IMPLEMENTATION HURA

City of Trees

Big Wood River

Hailey's Quirky Culture

Carbonate & Croy Canyon

GGLO

BULLION PATHWAY TREE + PLANT PALETTE

DOWNTOWN MASTER PLAN PHASE 1 IMPLEMENTATION HURA

Trees

Understory Plantings

GGLO

BULLION PATHWAY FURNITURE + MATERIALS

DOWNTOWN MASTER PLAN PHASE 1 IMPLEMENTATION HURA

wooded material

Benches



Tables



Lighting



Paving Materials



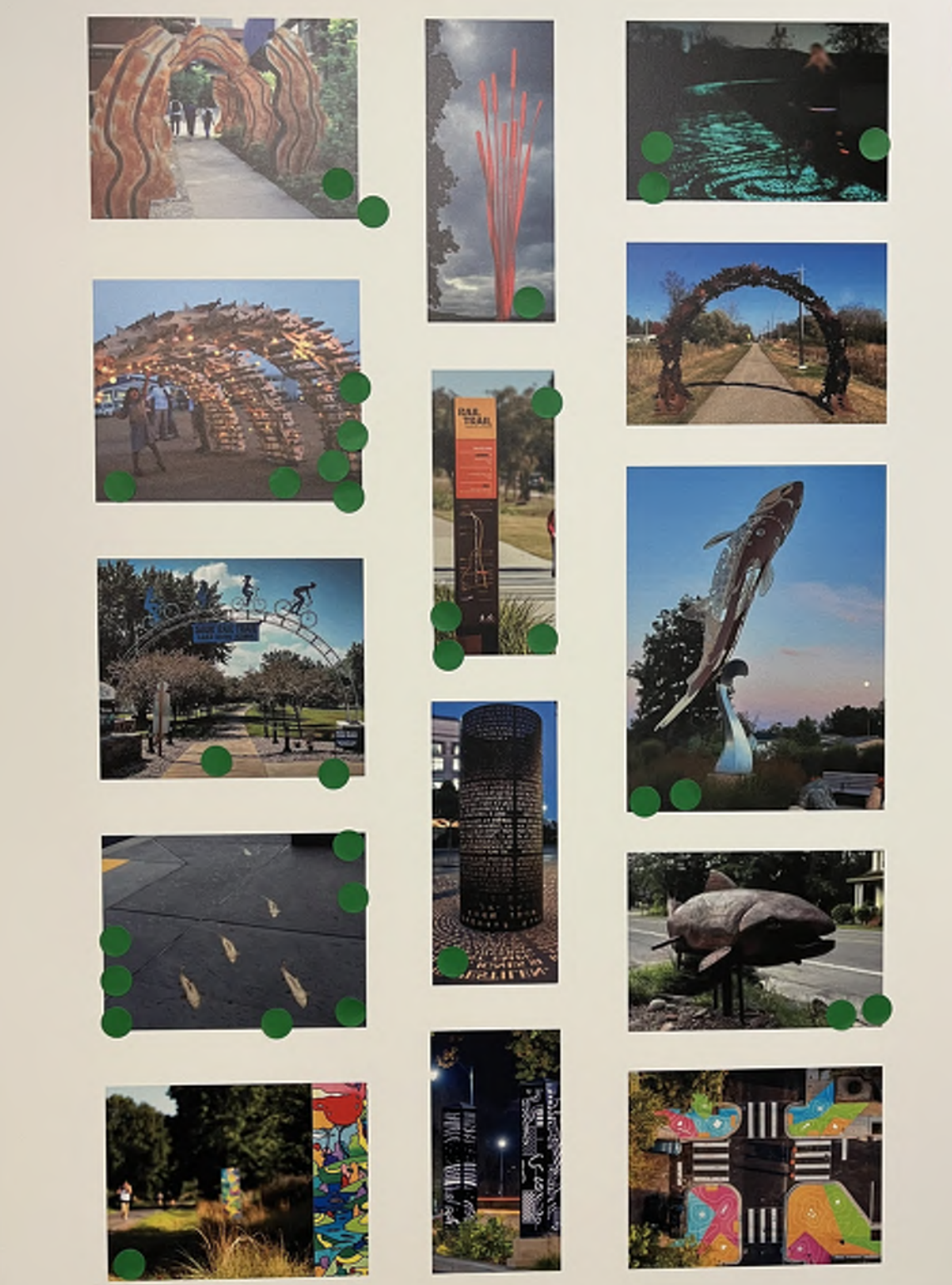
Bike Racks



GGLO

BULLION PATHWAY ART & GATEWAYS

DOWNTOWN MASTER PLAN PHASE 1 IMPLEMENTATION HURA



GGLO

CONCEPT REFINEMENT

BIG WOOD RIVER

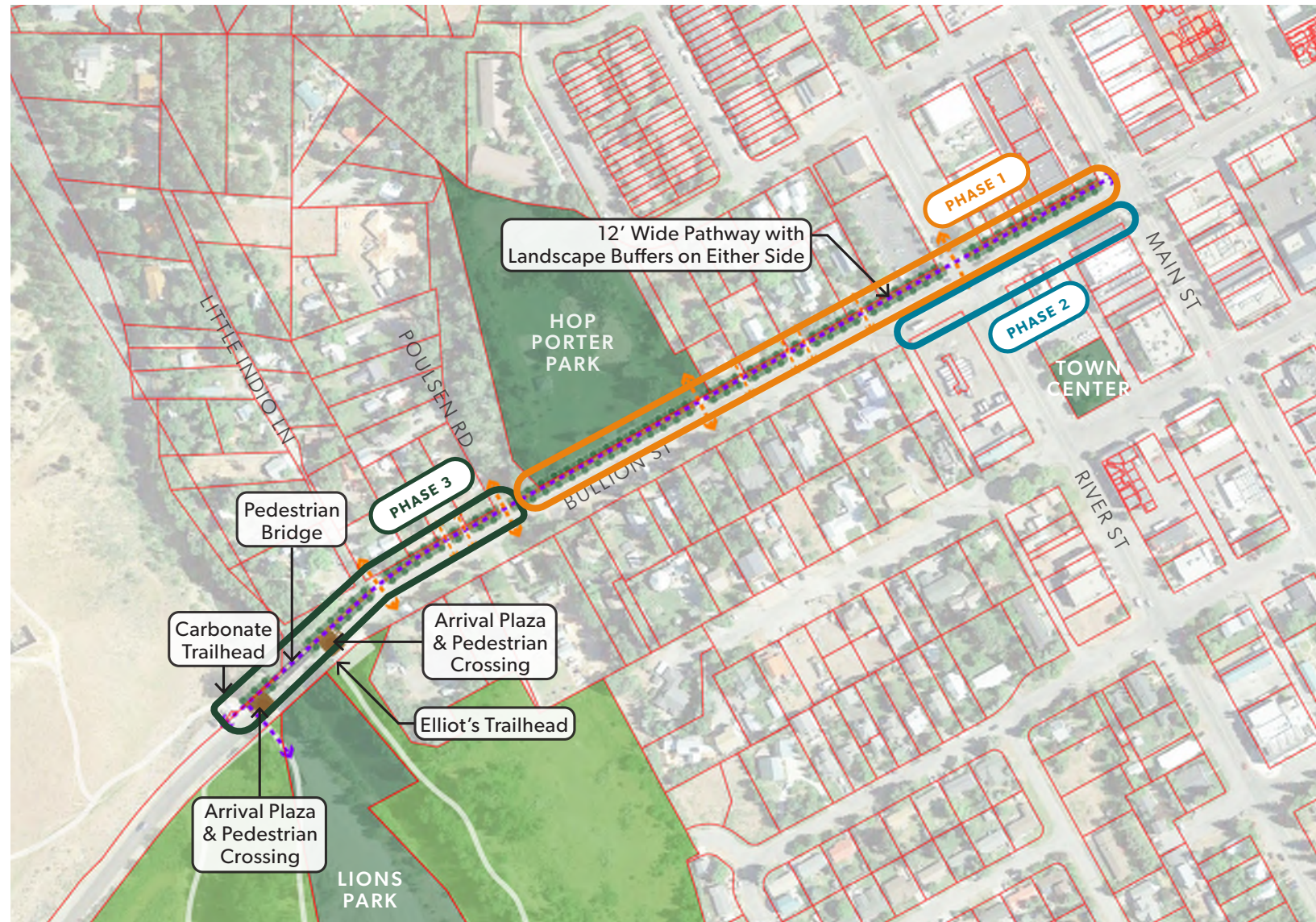
The Bullion Pathway leads directly to the Big Wood River, natural wonder and recreational respite for Hailey residents. The Big Wood is characterized by large trees, fall color, a layered understory and its organic, meandering form.



BIG WOOD RIVER

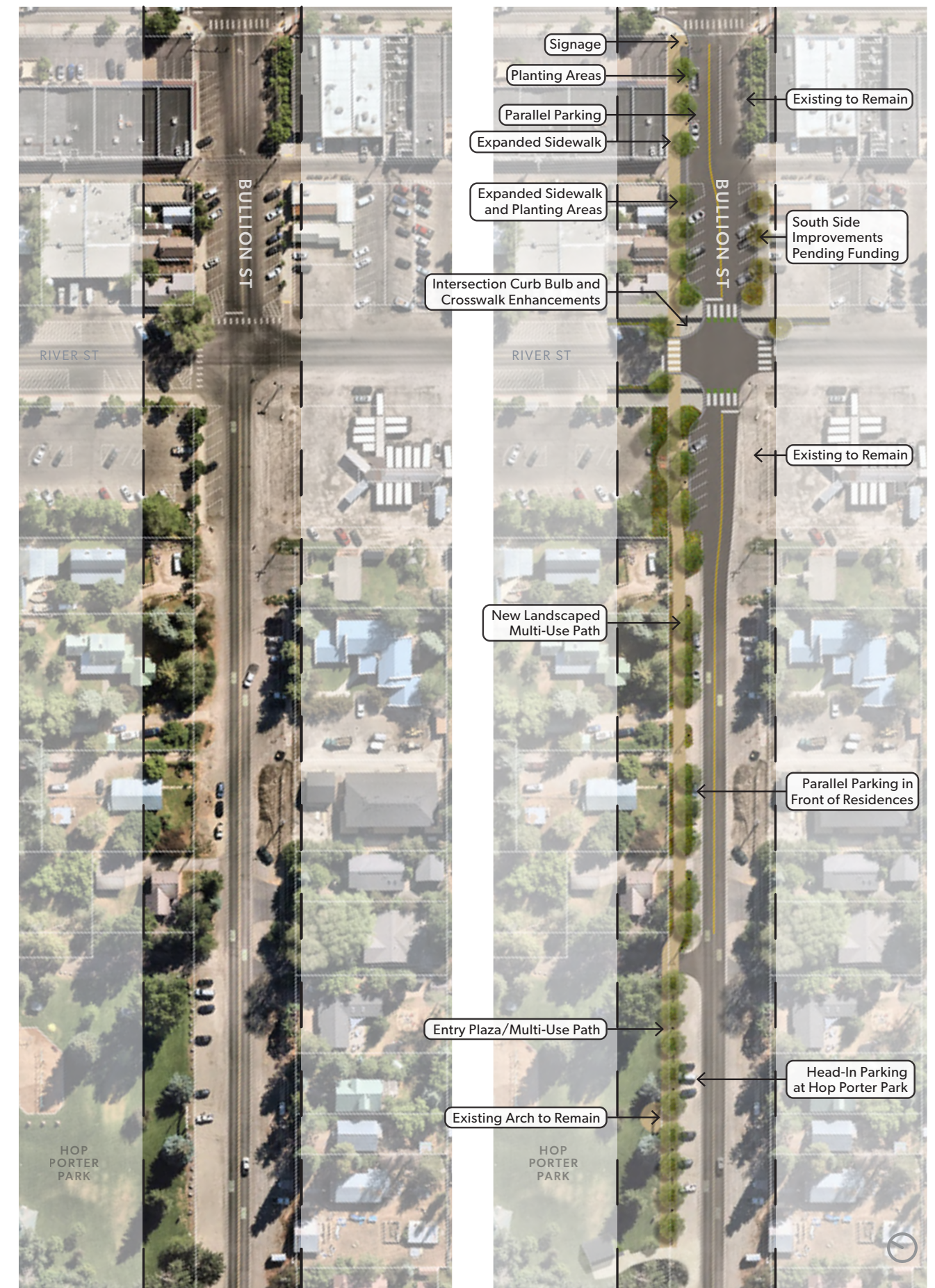


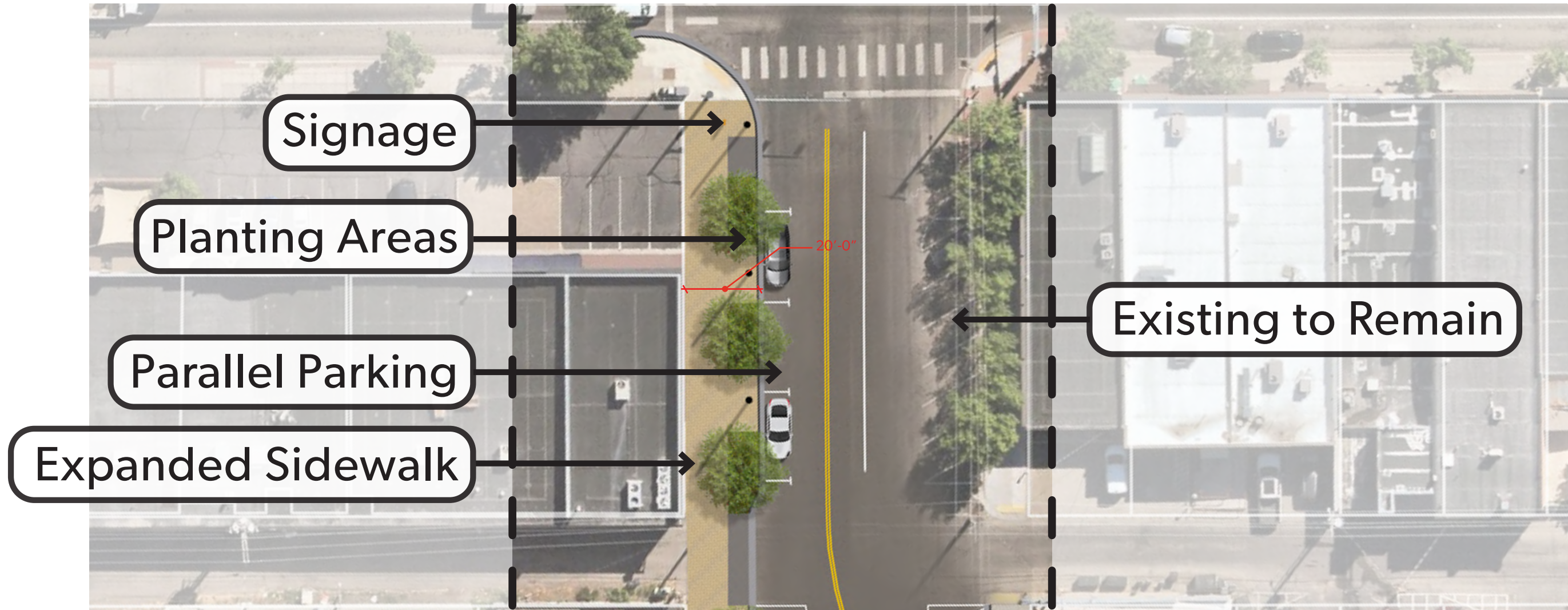
PHASING PLAN



EXISTING CONDITION

PHASE 1





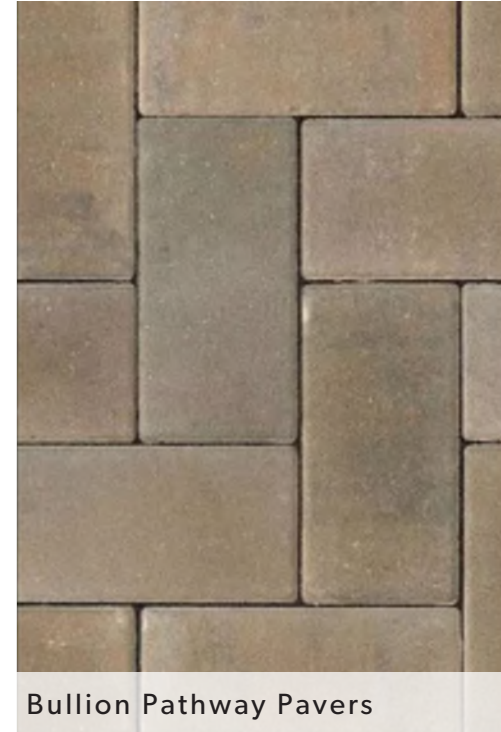
Shade Tree



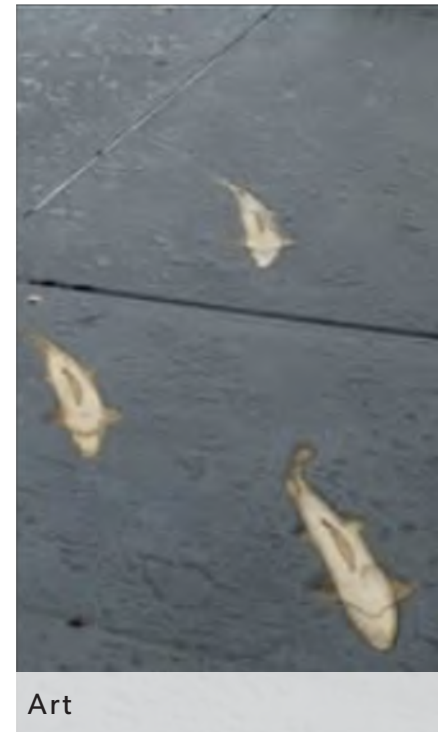
Wayfinding



Pedestrian Light



Bullion Pathway Pavers

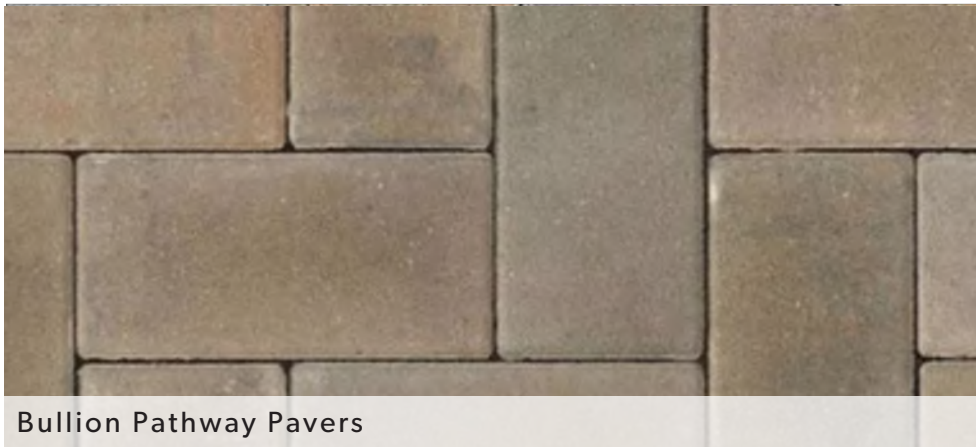


Art





Picnic Table



Bullion Pathway Pavers



Shade Tree



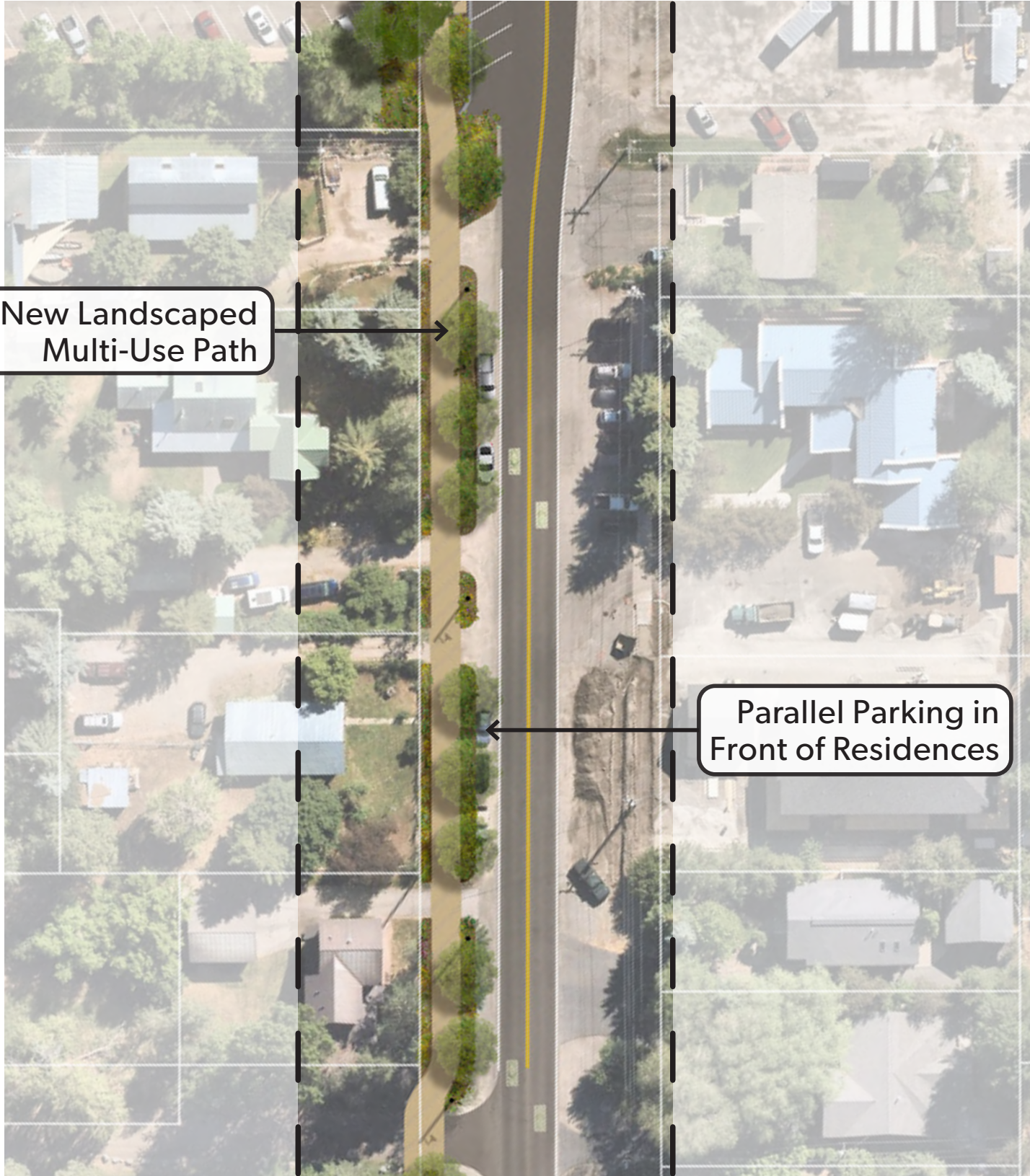
Custom Bike Rack



Existing Condition
Parking Count: 32

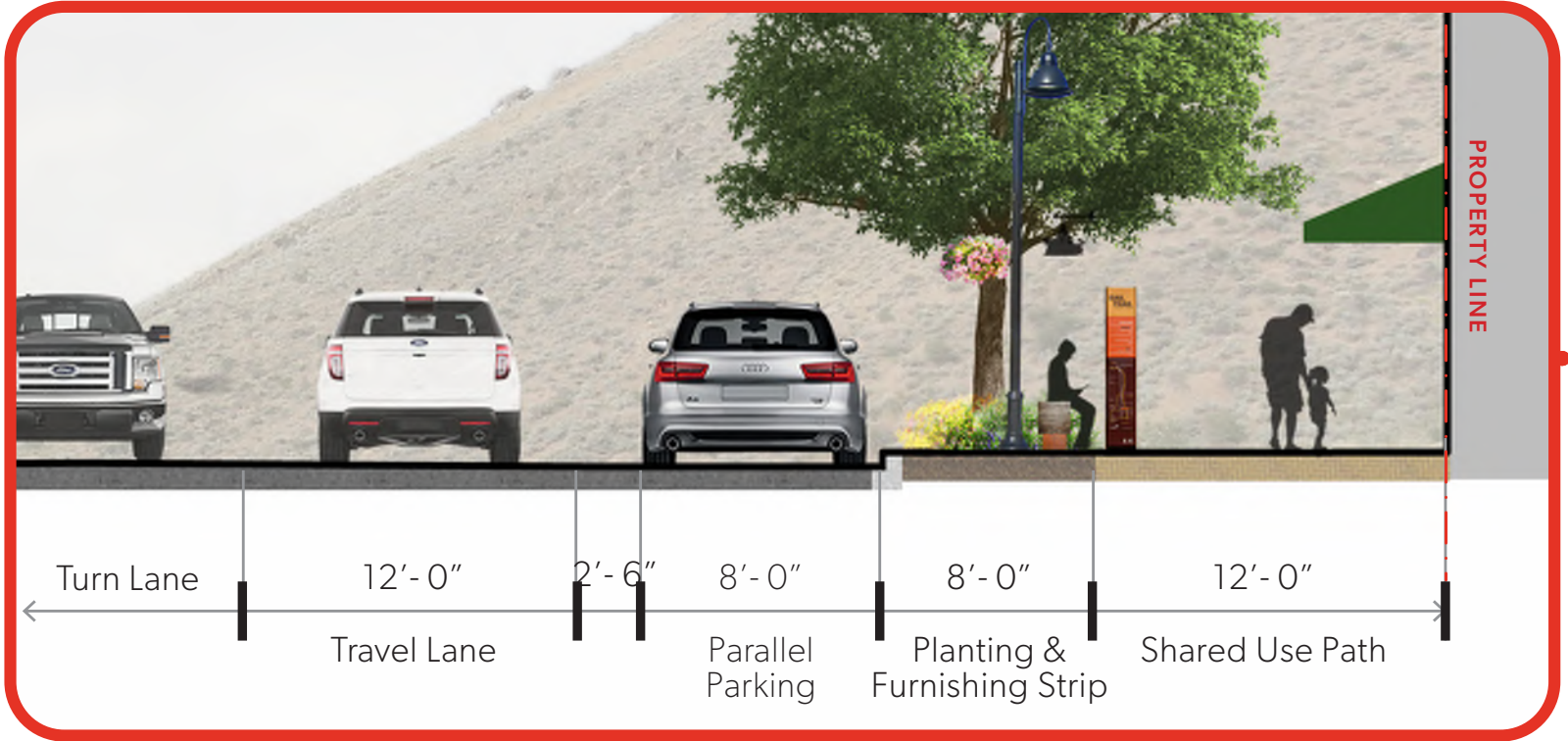


Potential Restripe with Parklet
Parking Count: 45

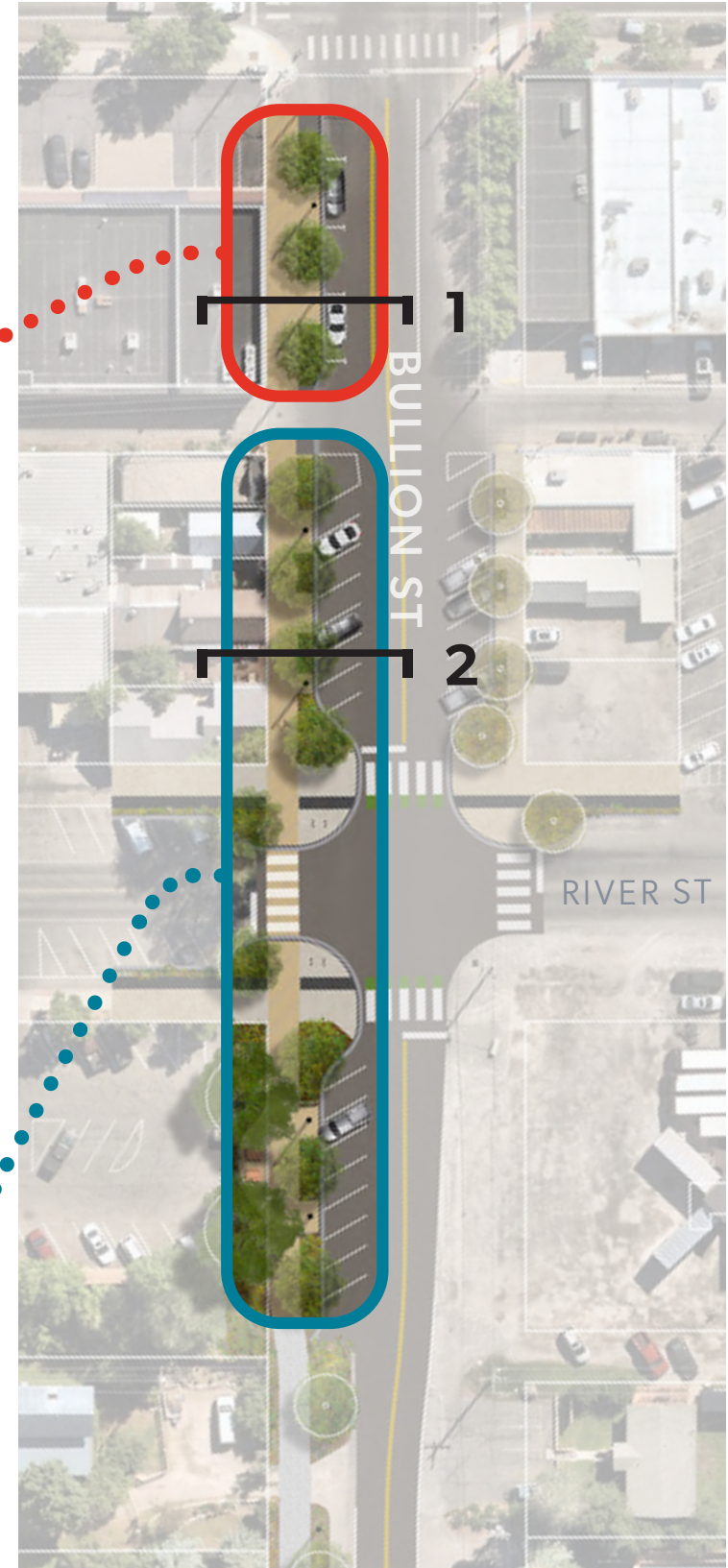
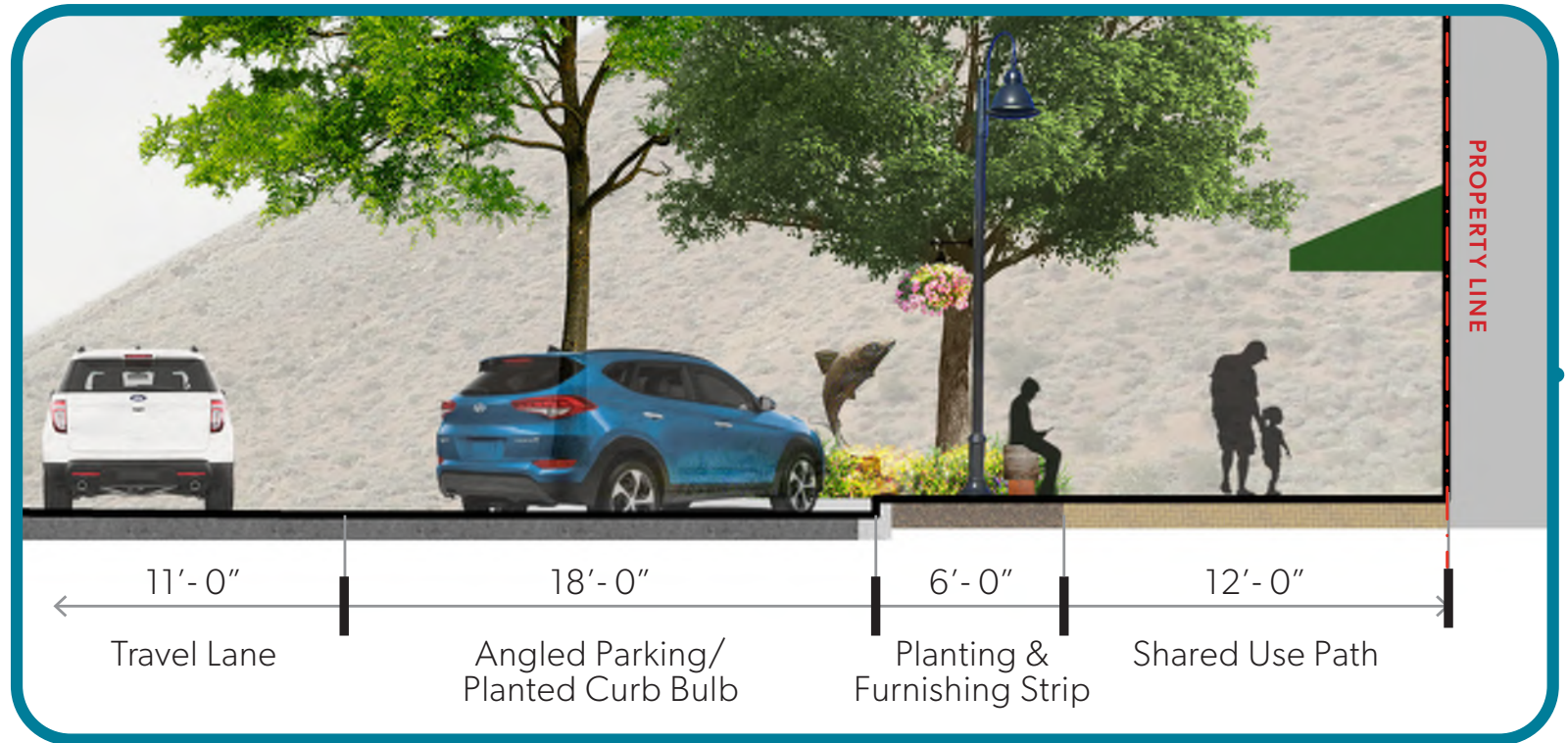




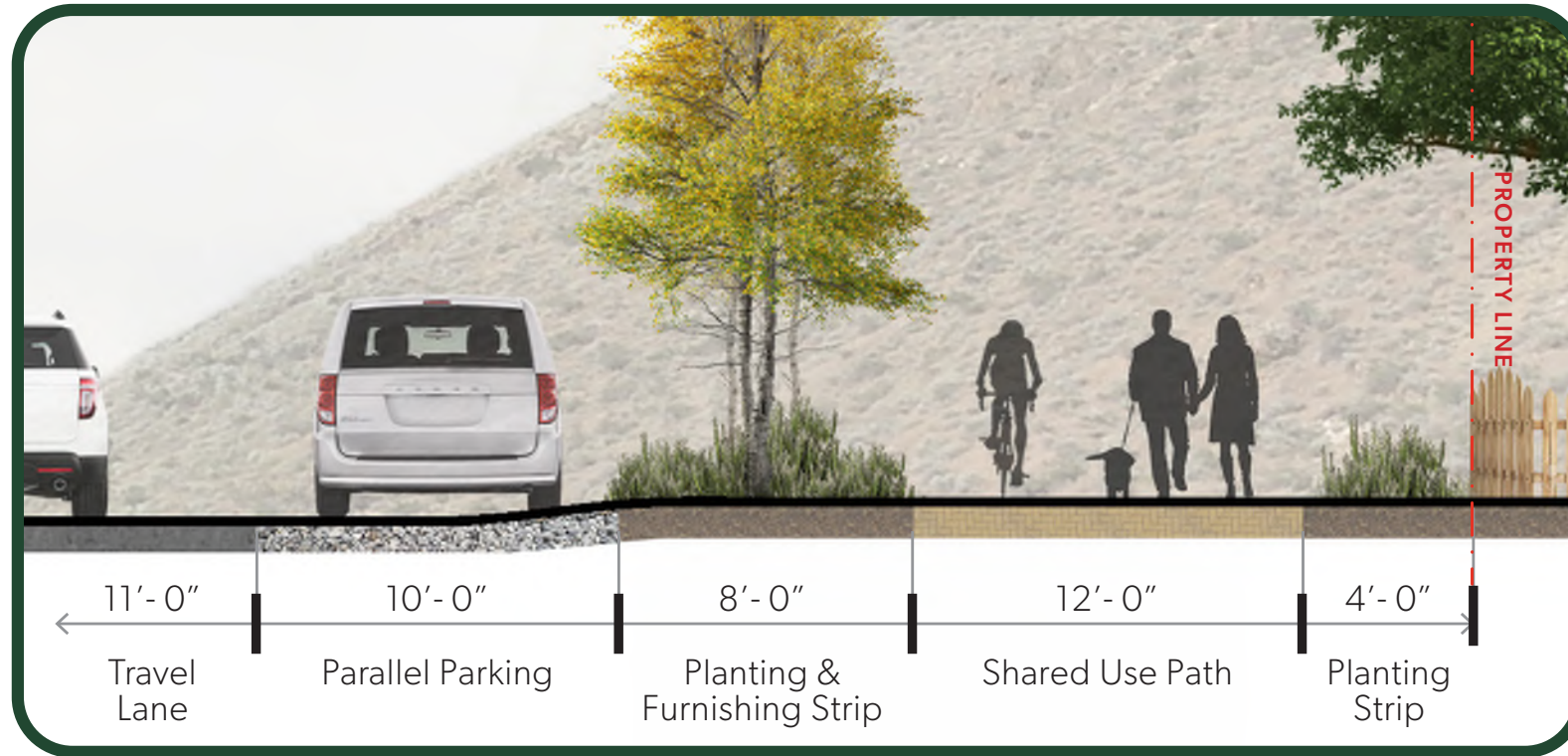
1 DOWNTOWN SECTION 01



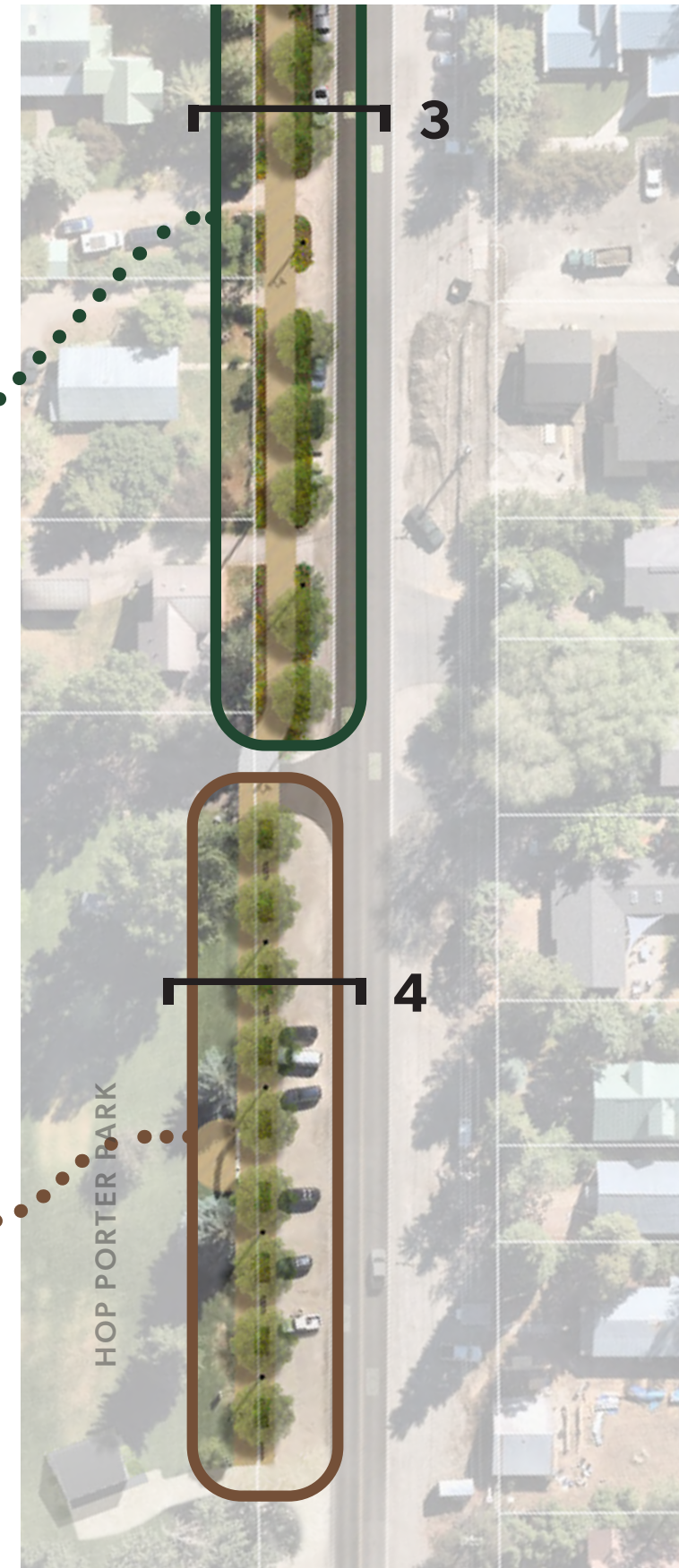
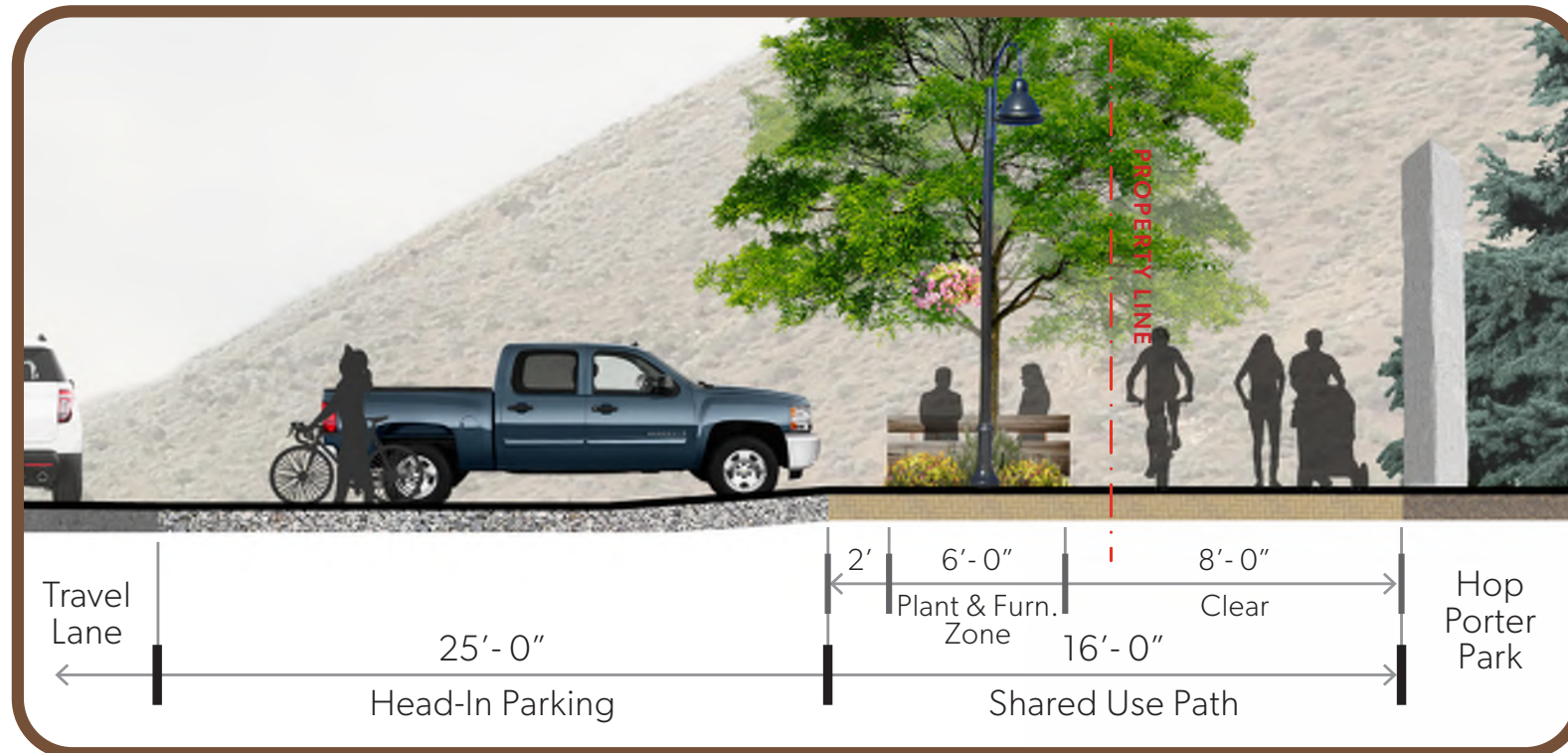
2 DOWNTOWN SECTION 02



3 RESIDENTIAL SECTION



4 HOP PORTER PARK SECTION



LIGHTING



Ornamental Pedestrian Light
River Street Standard + Hanging Baskets

PAVING, FURNISHINGS

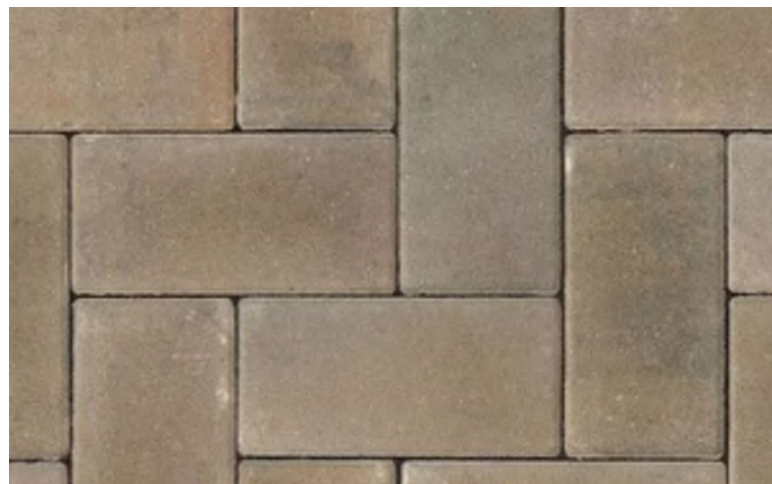


Picnic Table | STREETLIFE Drifter



Bench | STREETLIFE Drifter

The Hague (NL)

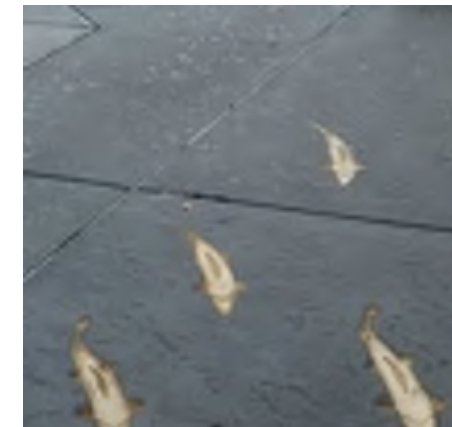


Sandset Pavers (Herringbone Pattern)
Mutual Materials Holland Summit Blend

WAYFINDING AND ART



Mural
Local Artist (private-public partnership)



Art | River Inspired



Bike Rack
Local Artist (custom fabricated)



Wayfinding
Branded signpost (custom fabricated)

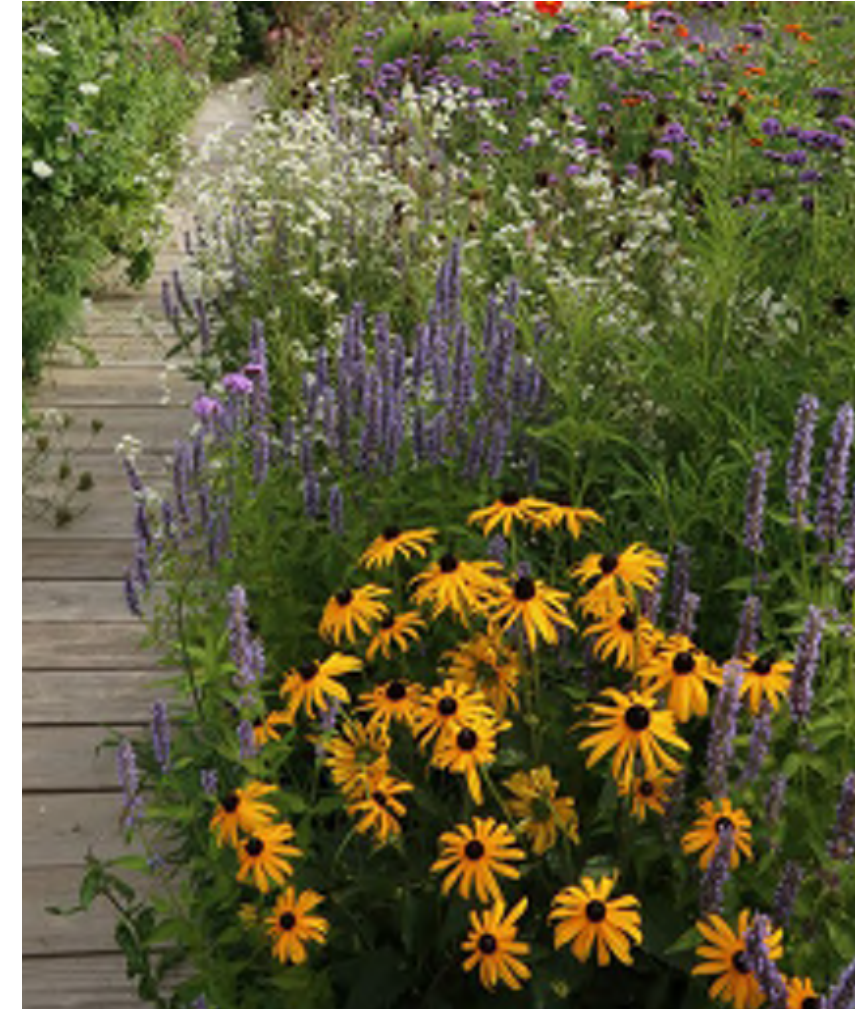
PLANTING



Grasses & Perennials



Dwarf Dogwoods and Willows

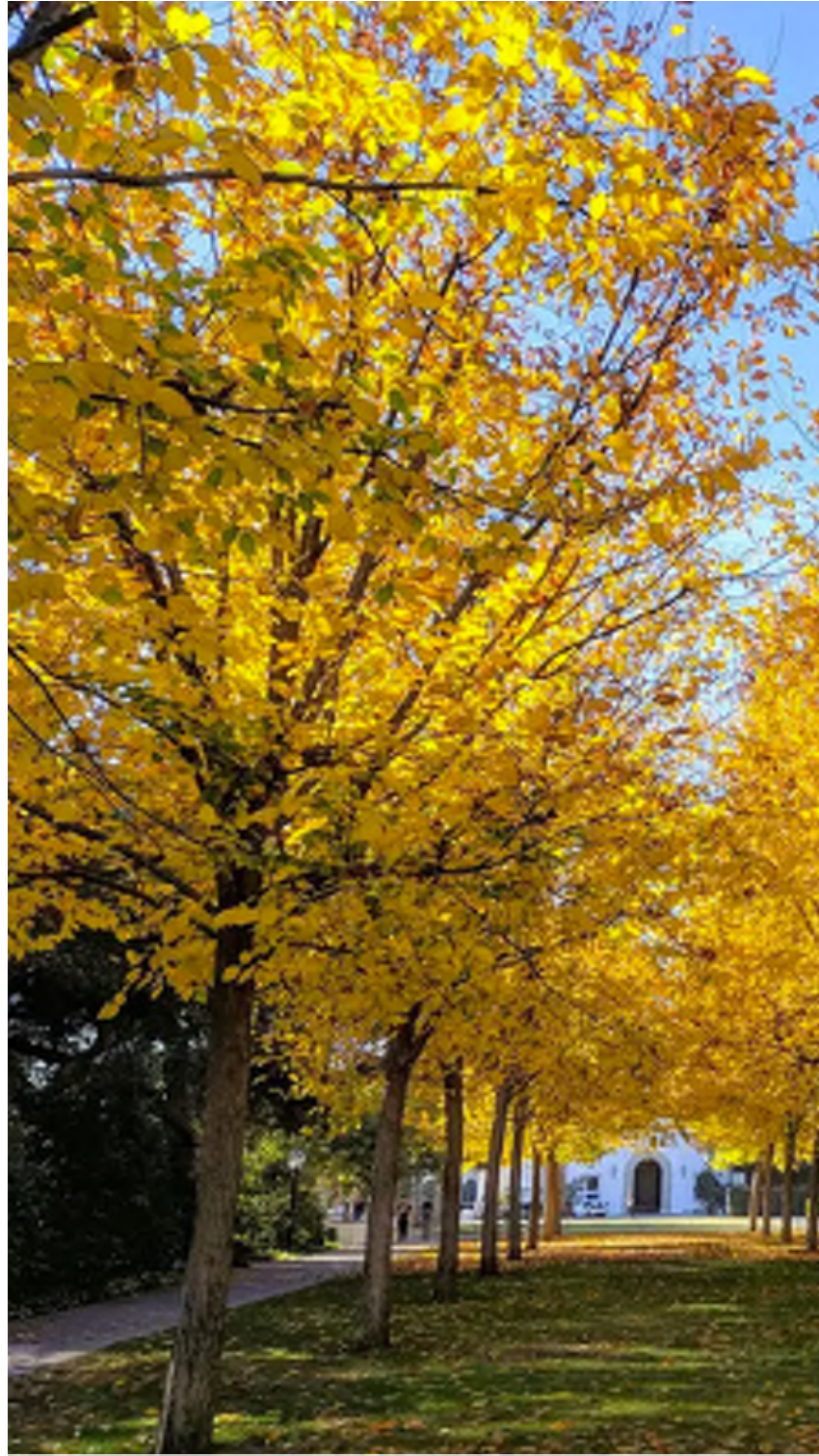


Pollinators



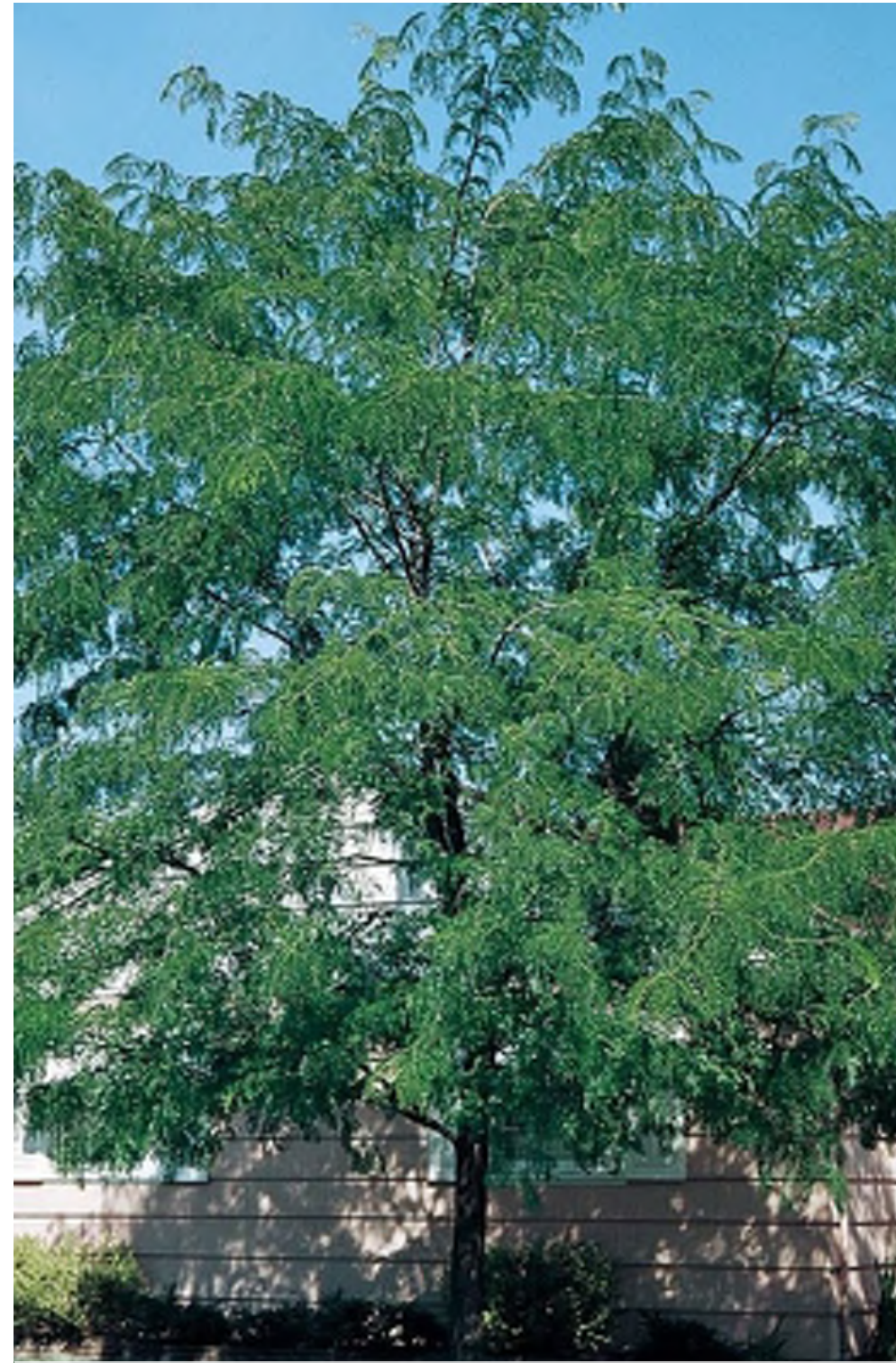
Locally Sourced Boulders

DOWNTOWN & RESIDENTIAL SECTION TREE



American/Princeton Elm (disease resistant)

HOP PORTER PARK SECTION TREE



Northern Acclaim Honeylocust

PARKLET/SPECIMAN TREE



Bur Oak

Location	Proposed Tree Type	Proposed Tree Species
Downtown Section	Class III Street Tree	Princeton Elm
Residential Section	Class III Shade Tree	Princeton Elm
Hop Porter Section	Class II Shade Tree	Northern Acclaim or Shademaster Honeylocust
Parklet at City Lot	Class III Shade Tree	Bur Oak
River Street Corner	Class III Street Tree	Swamp White Oak or White Oak
River Street	Class II Street Tree	Northern Acclaim or Shademaster Honey Locust



BULLION STREET PROMENADE BUDGET

PHASE 1 \$2.35M

Main Street to Hop Porter Park. Full implementation from River Street intersection to alley, tactical implementation from alley to Main Street. North Side of the Street from River Street to Hop Porter Park.

PHASE 2 \$2M

1.5 blocks from Main to beyond River, south side of street; new roadway Main to River; complete implementation on N side of block from Main to alley.

Bullion Pathway
Concept Refinement
Hailey, ID

GGLO
HURA
Design Package

