

# Bullion Pathway Documentation for Construction Update | HURA Meeting

January 20 2026





**Layout**

# Big Wood River

The Bullion Pathway leads directly to the Big Wood River, natural wonder and recreational respite for Hailey residents. The Big Wood is characterized by large trees, fall color, a layered understory and its organic, meandering form.



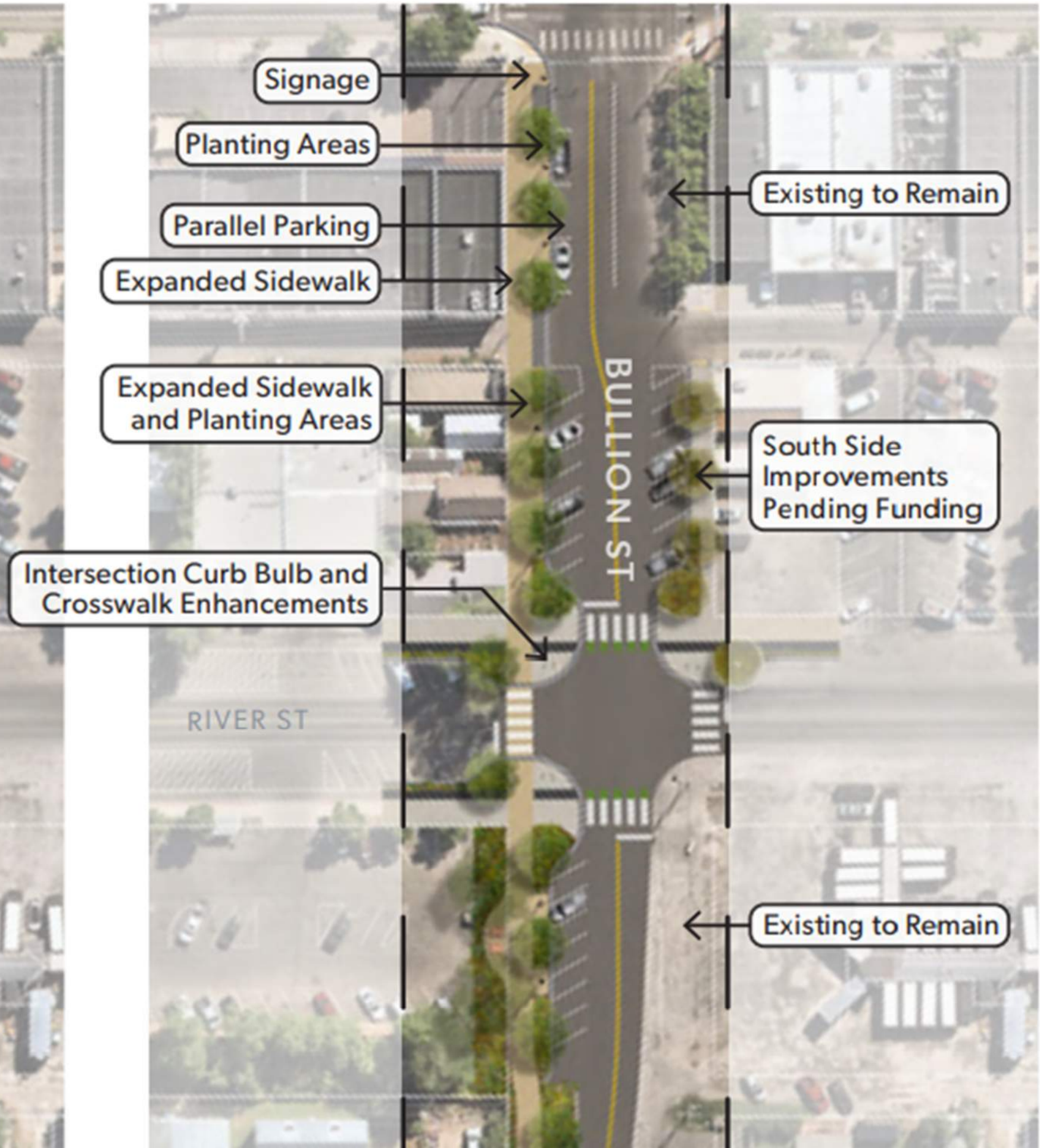
# Big Wood River

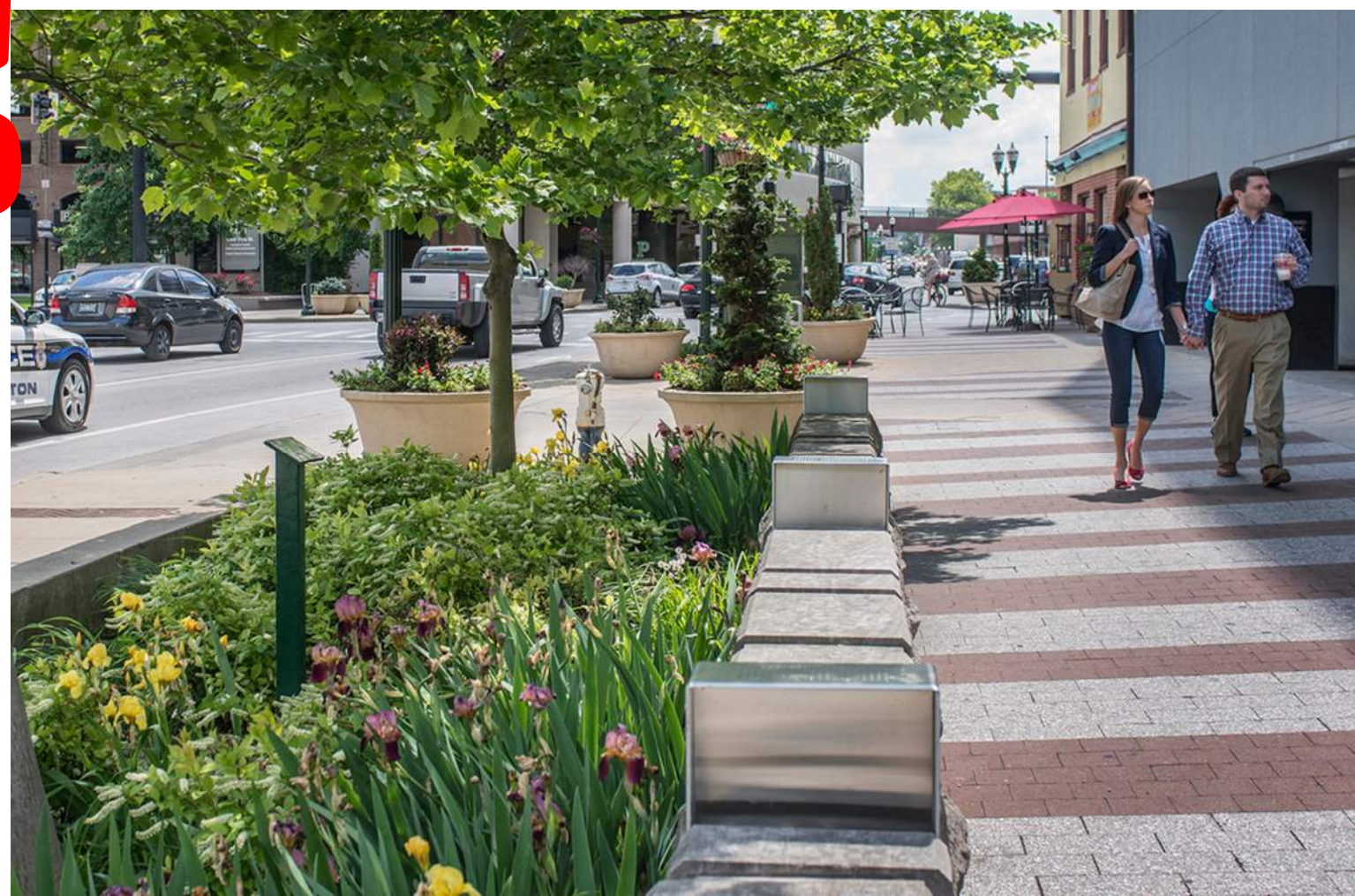


# EXISTING CONDITION



# PHASE 1





# Big Wood River



# Big Wood River



186

194

198

161

169

103

173

11785

1741

1720

1660

1640

1661

1641

1620

1560

1621

1561

1551

206

McKenzie Ln

113

110

N 2nd Ave

200

102

11767

11765

11763

11761

144

River Grove Ln

114

11747

1261

1251

191

11745

181

171

106

Mountain View Ln

151

141

131

11735

121

11731

31

109

101

105

McKercher Blvd

N Main St

931

911

120

# Big Wood River



186

194

198

161

103

11785

1741

1720

1660

1640

1620

1561

1551

144

1261

1251

191

181

171

151

141

131

121

31

9

169

173

113

1641

1621

1561

1551

200

102

206

11767

11765

11763

11761

114

River Grove Ln

11747

11745

106

Mountain View Ln

11735

11731

109

101

105

931

120

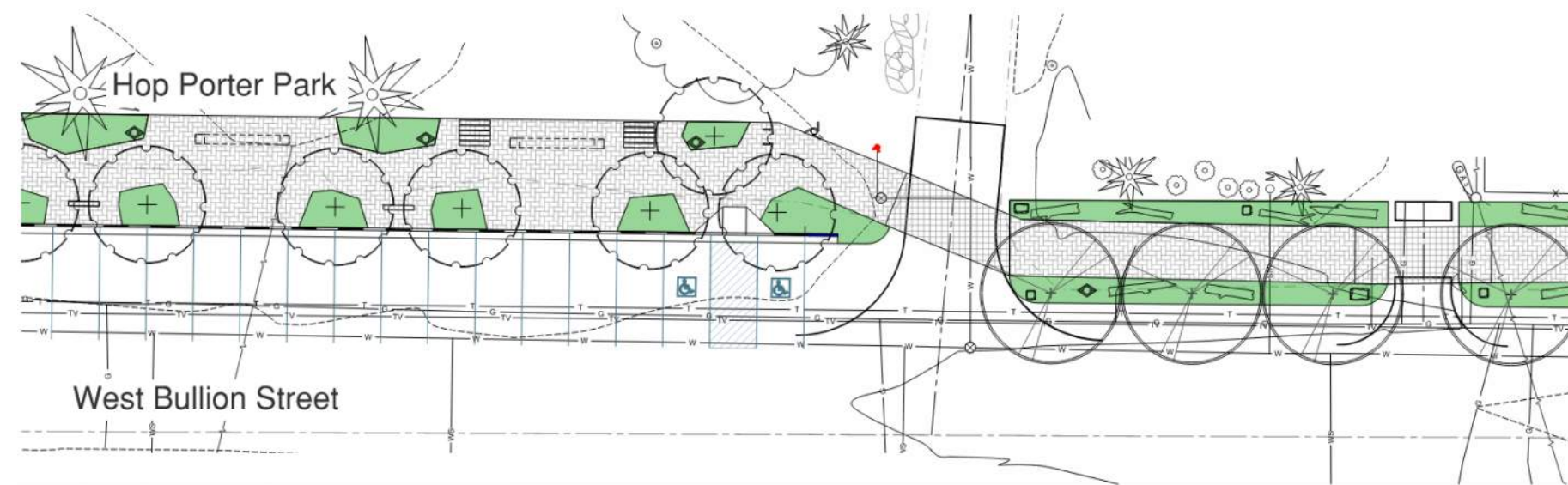
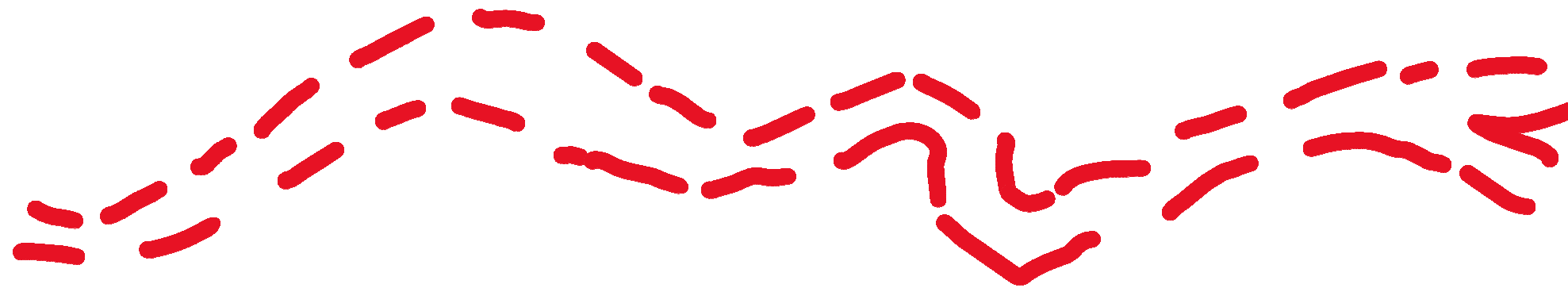
911

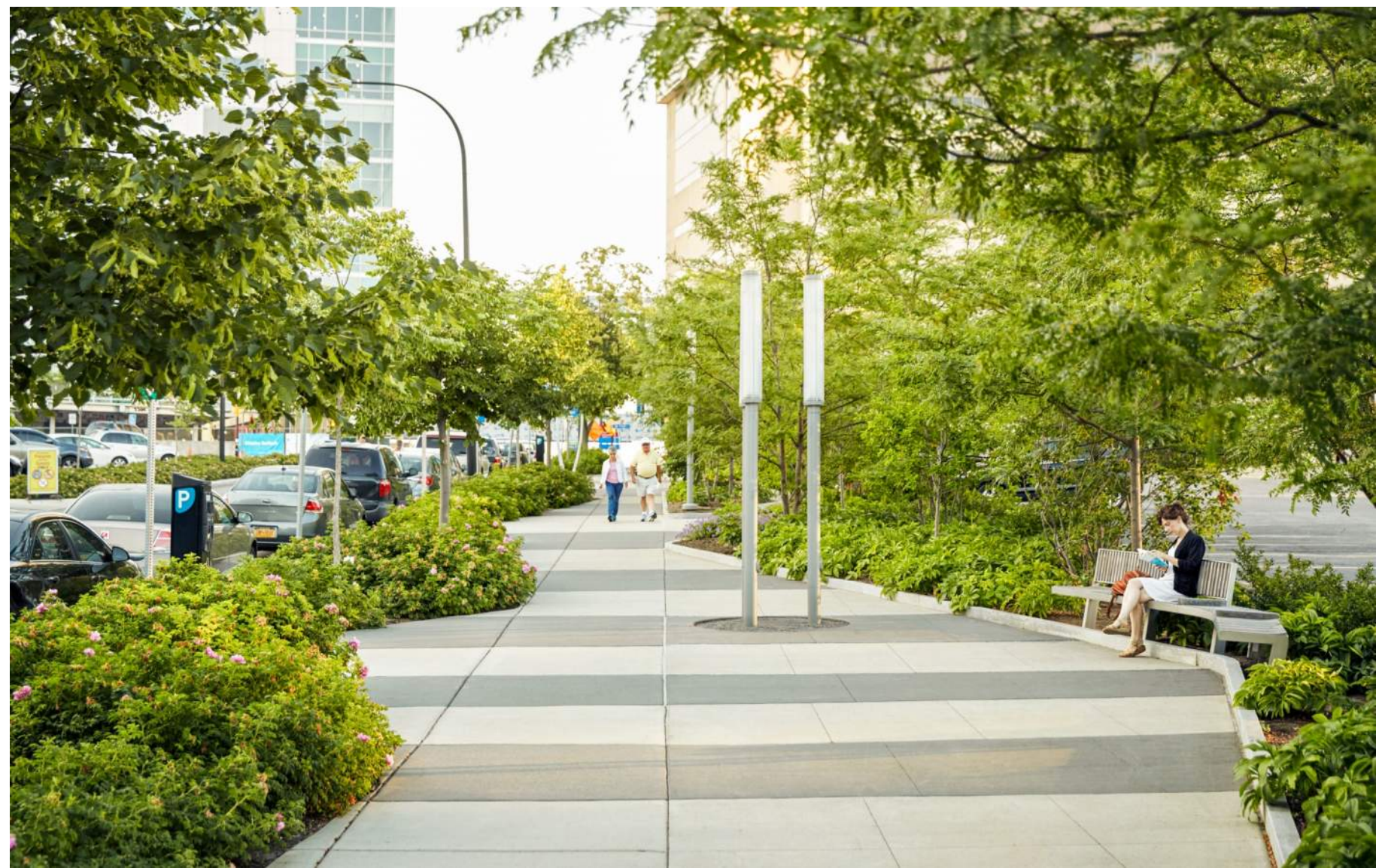
McKercher Blvd

N Main St

N 2nd Ave

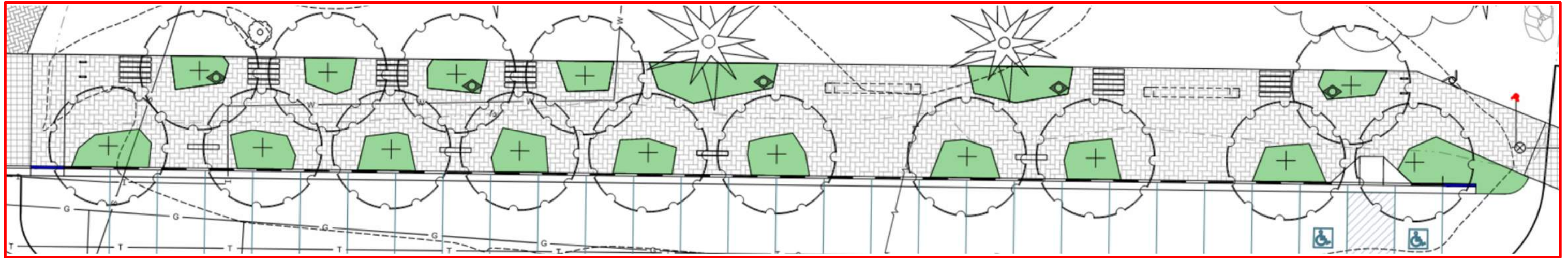
Big Wood River



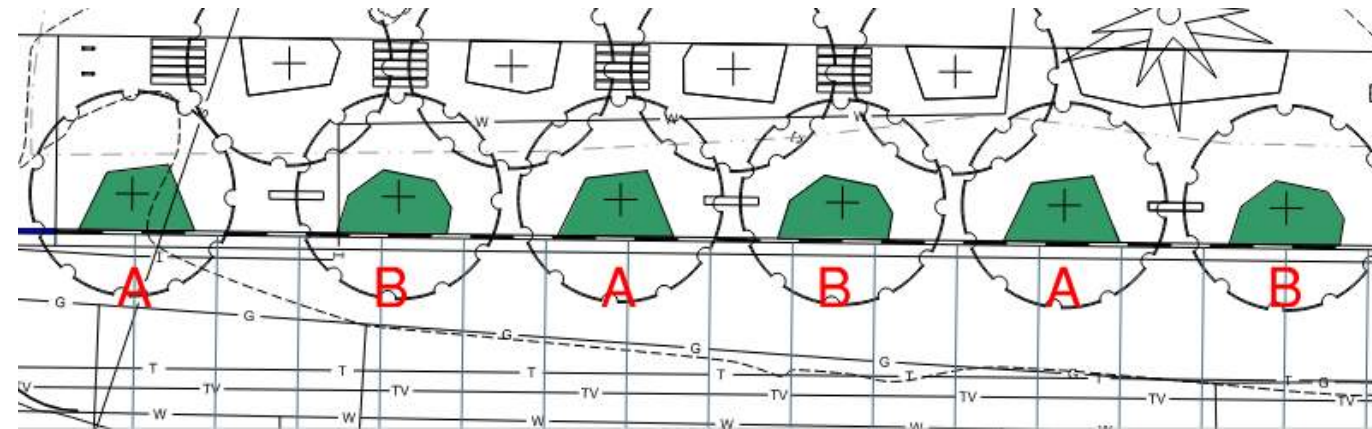




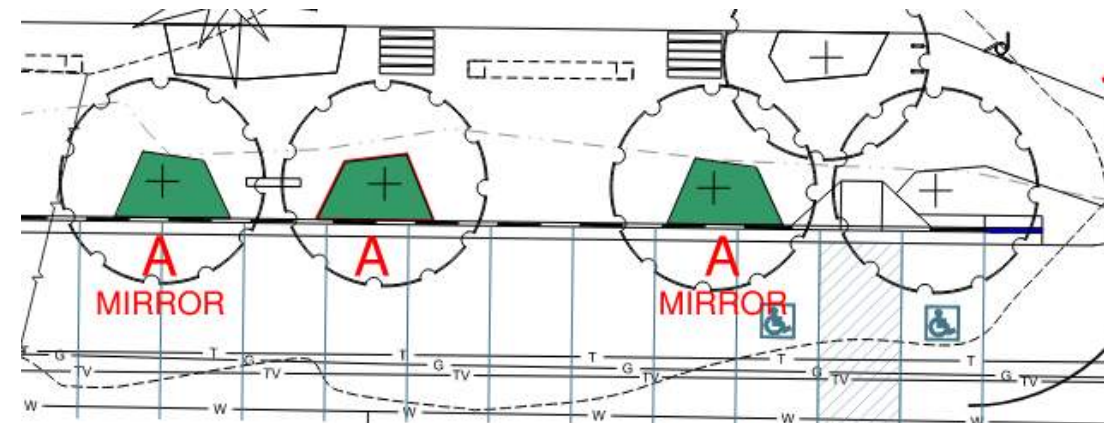
**Recommended (Current Design)**



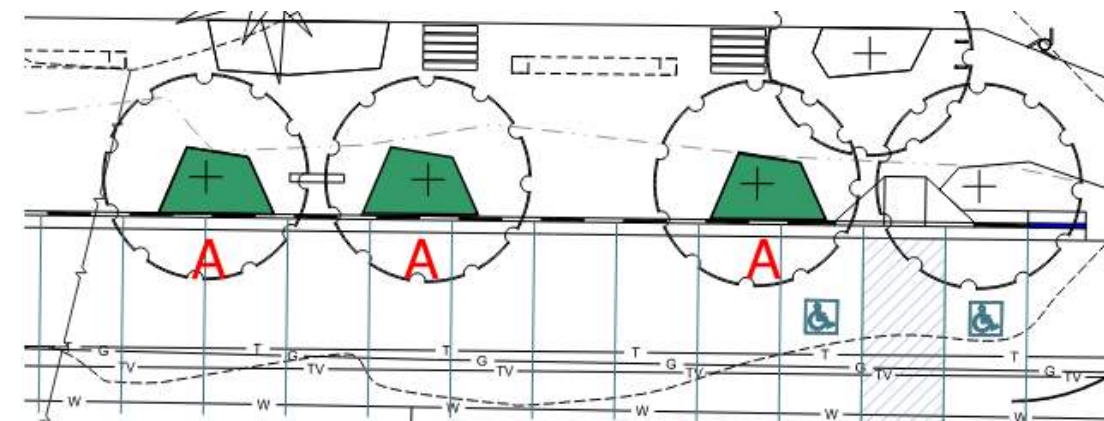
**Option 1 A-B Alternating Pattern**



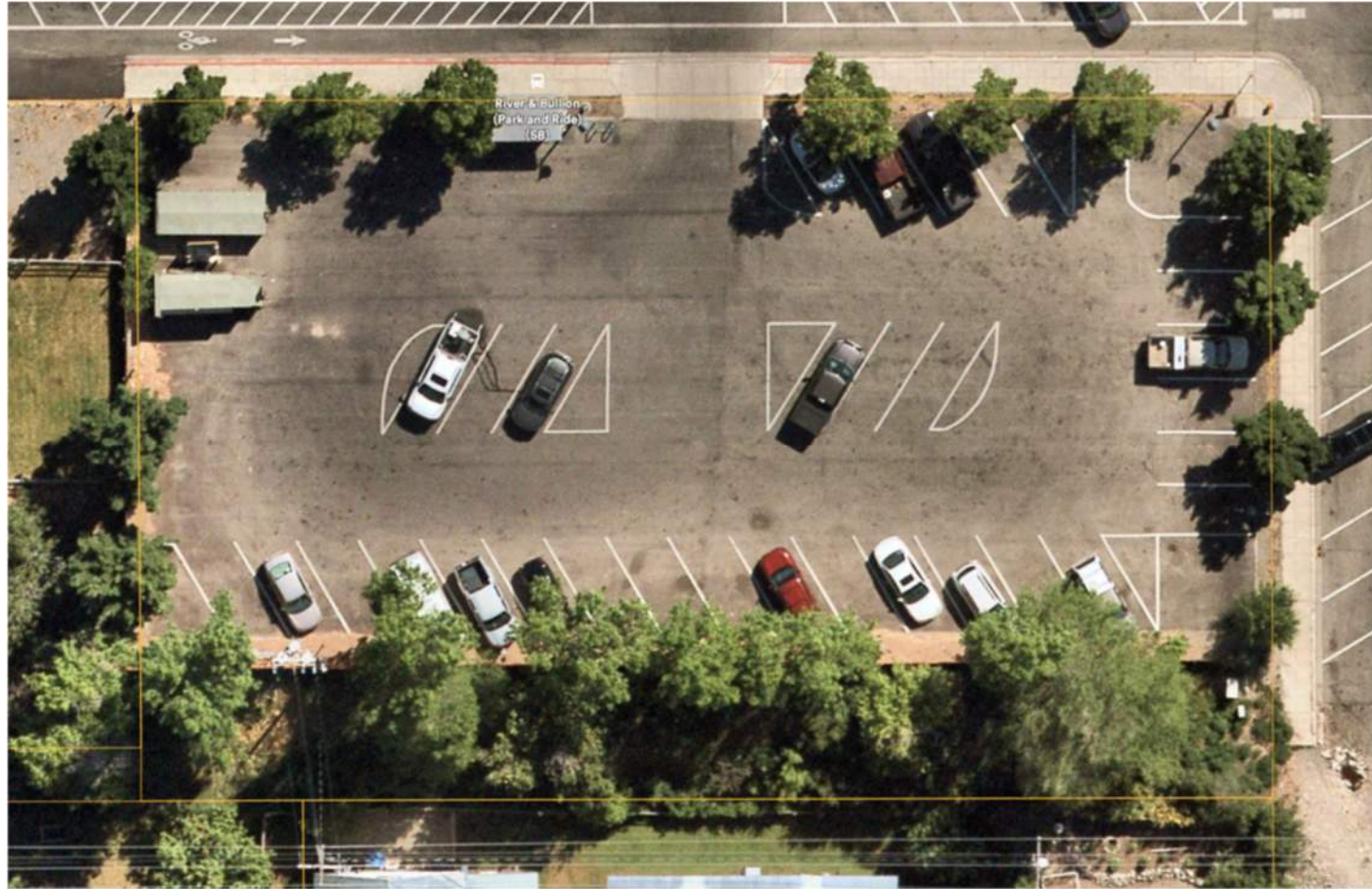
**Option 2 A-A Mirrored Pattern**



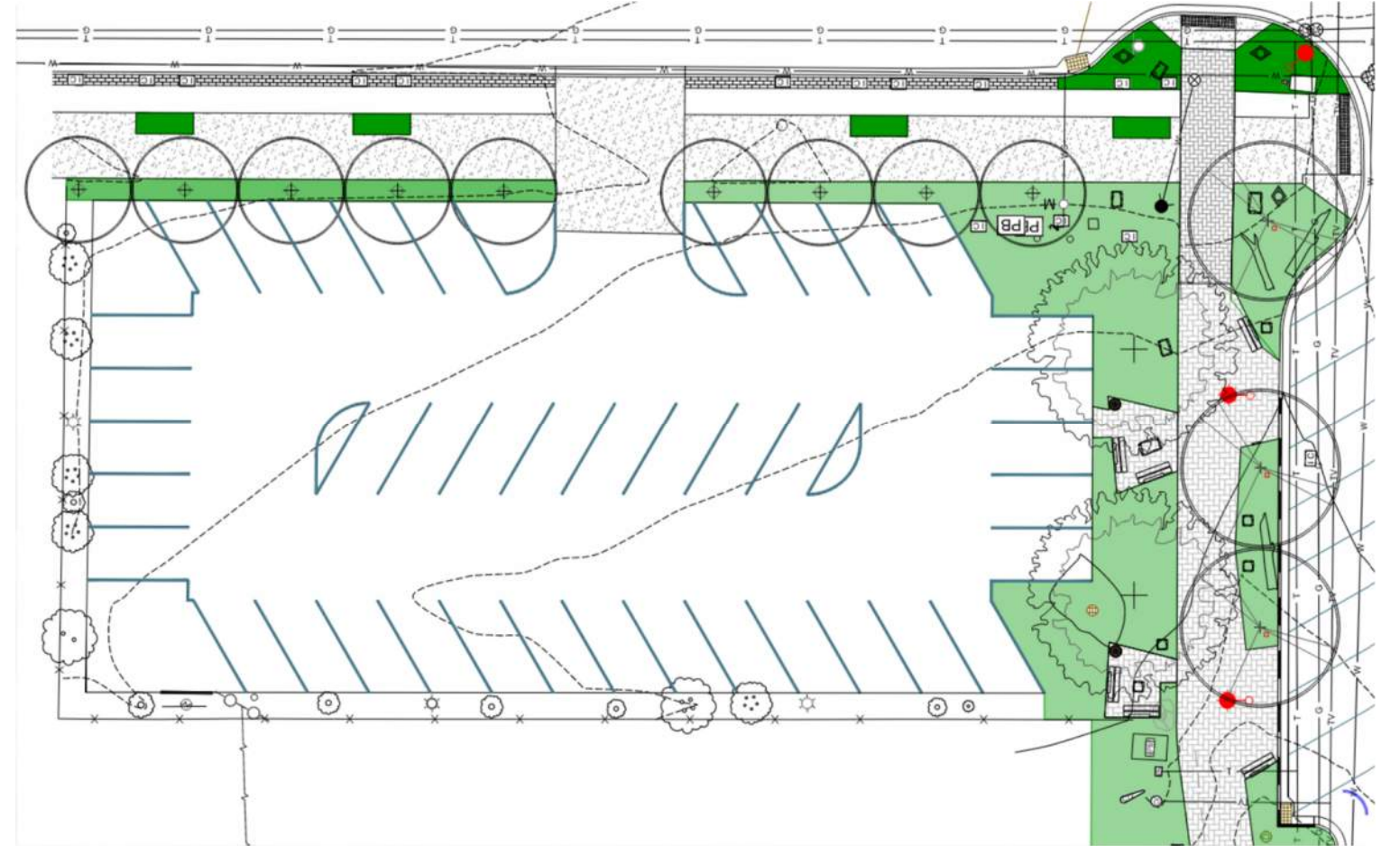
**Option 3 A Repeating Pattern**



# Bullion Pathway Concept Refinement | City Parking Lot



**Existing Condition**  
Parking Count: 32



**Restripe with Parking Amenity**  
Parking Count: 40

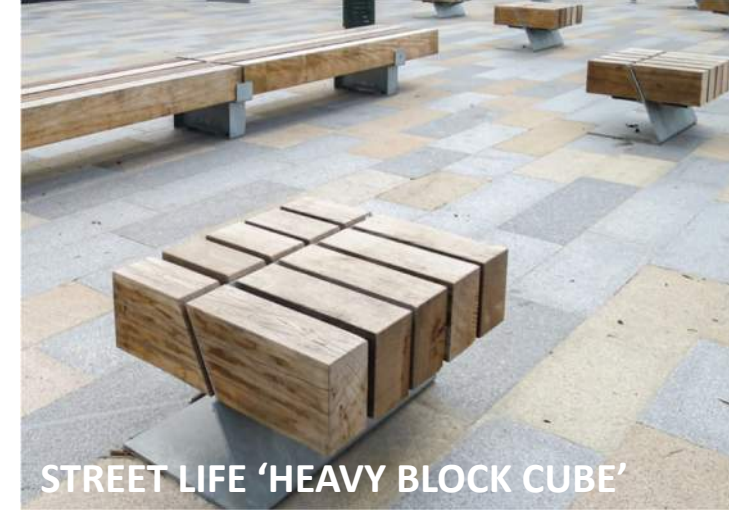


# Elements

LIGHTING



SITE FURNISHINGS & PAVING



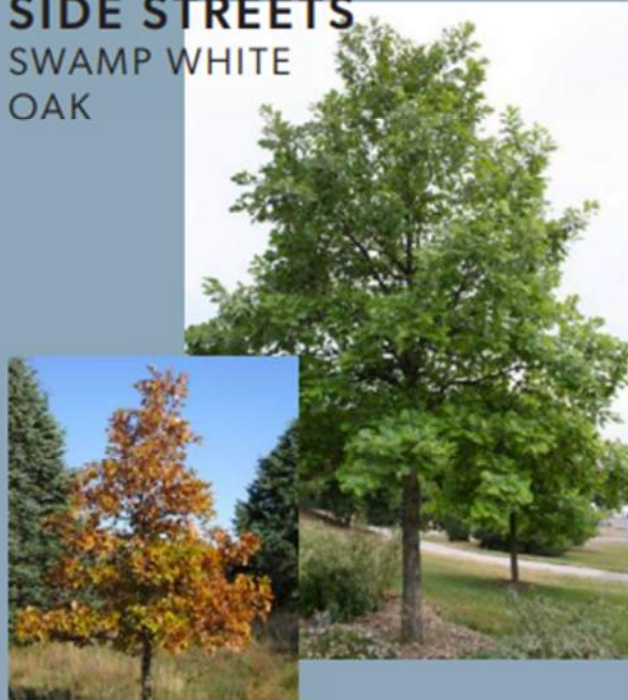
# Bullion Pathway Concept Refinement | Wayfinding & Art



## DOWNTOWN TREE SELECTIONS

The intent of the Downtown Street Tree Selections are to emphasize the distinct character of each Downtown street while also unifying the area with a limited palette of tree species. Large street trees provide shade, create visual interest, sequester carbon, and purify the air. A larger street tree grows a taller canopy that provides all the benefits of a healthy street tree while also ensuring visibility is preserved for business fronts on the ground level.

### SIDE STREETS SWAMP WHITE OAK



### MAIN STREET HYBRID ELM



alternate:  
AMERICAN  
LINDEN



### RIVER STREET NORTHERN ACCLAIM HONEYLOCUST



### CURB BULBS (AT RIVER STREET) SWAMP WHITE OAK



**FLOWERING TREES**



Tree Lilac

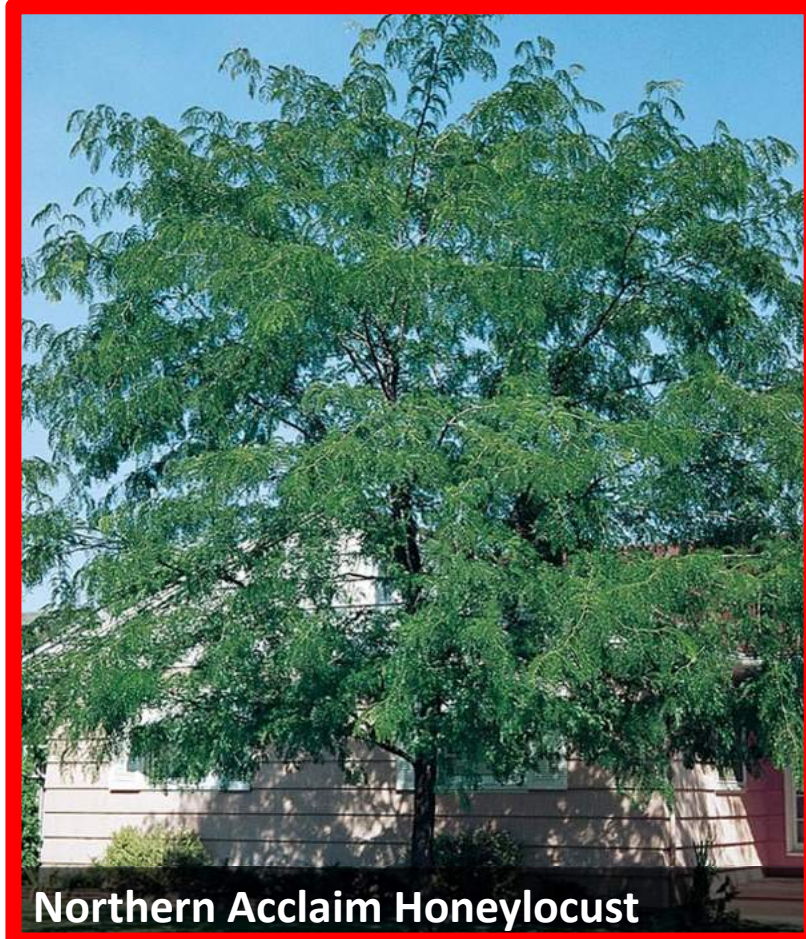


Washington Hawthorn



Serviceberry (tree form)

**PARK/PLAZA TREES**



Northern Acclaim Honeylocust



Willow Oak

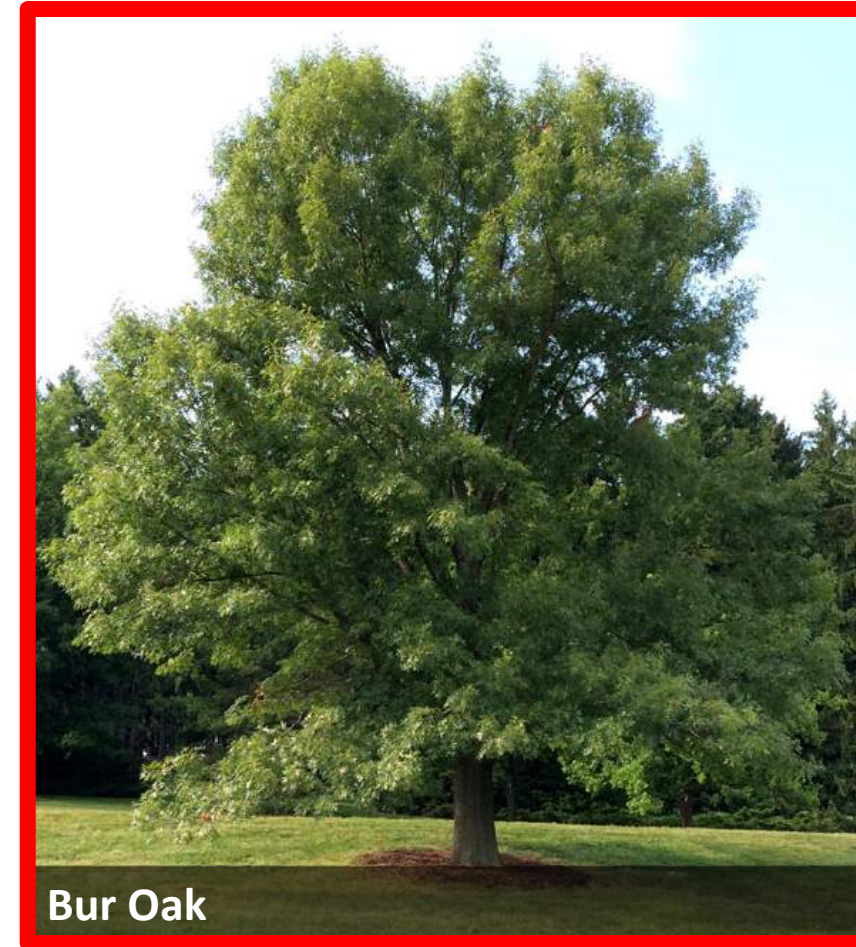
**LARGE CANOPY TREES**



London Plane Tree



American/Princeton Elm (disease resistant)



Bur Oak



White Pine (or conifers)

<b>Location</b>	<b>Proposed Tree Type</b>	<b>Proposed Tree Species</b>
<b>Downtown Section</b>	<b>Class III Street Tree</b>	<b>Princeton Elm</b>
<b>Residential Section</b>	<b>Class III Shade Tree</b>	<b>Princeton Elm</b>
<b>Hop Porter Section</b>	<b>Class II Shade Tree</b>	<b>Northern Acclaim or Shademaster Honeylocust</b>
<b>Parklet at City Lot</b>	<b>Class III Shade Tree</b>	<b>Bur Oak</b>
<b>River Street Corner</b>	<b>Class III Street Tree</b>	<b>Swamp White Oak or White Oak</b>
<b>River Street</b>	<b>Class II Street Tree</b>	<b>Northern Acclaim or Shademaster Honey Locust</b>

# Bullion Pathway Concept Refinement | Trees



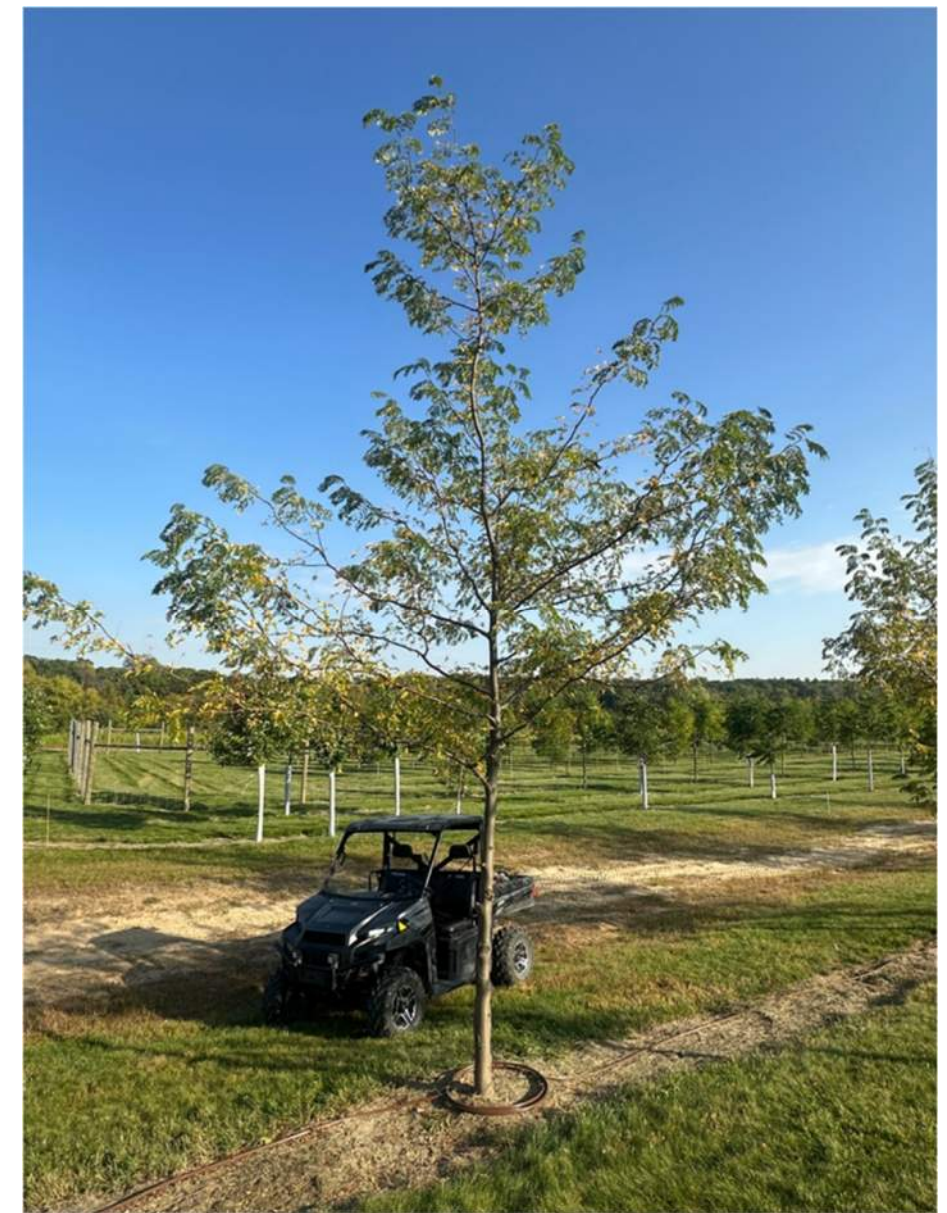
GENERATED BY:  
**STEFFEN NELSON**  
 425-654-4743  
 steffen@pacificplants.com

## ESTIMATE

CUSTOMER	City of Hailey
PROJECT	Bullion Street Trees
OFFICE CONTACT	
SITE CONTACT	
SITE ADDRESS	
CITY, STATE (ZIP)	
ESTIMATED INSTALL DATE	May/September 2026
DATE GENERATED	12/12/25

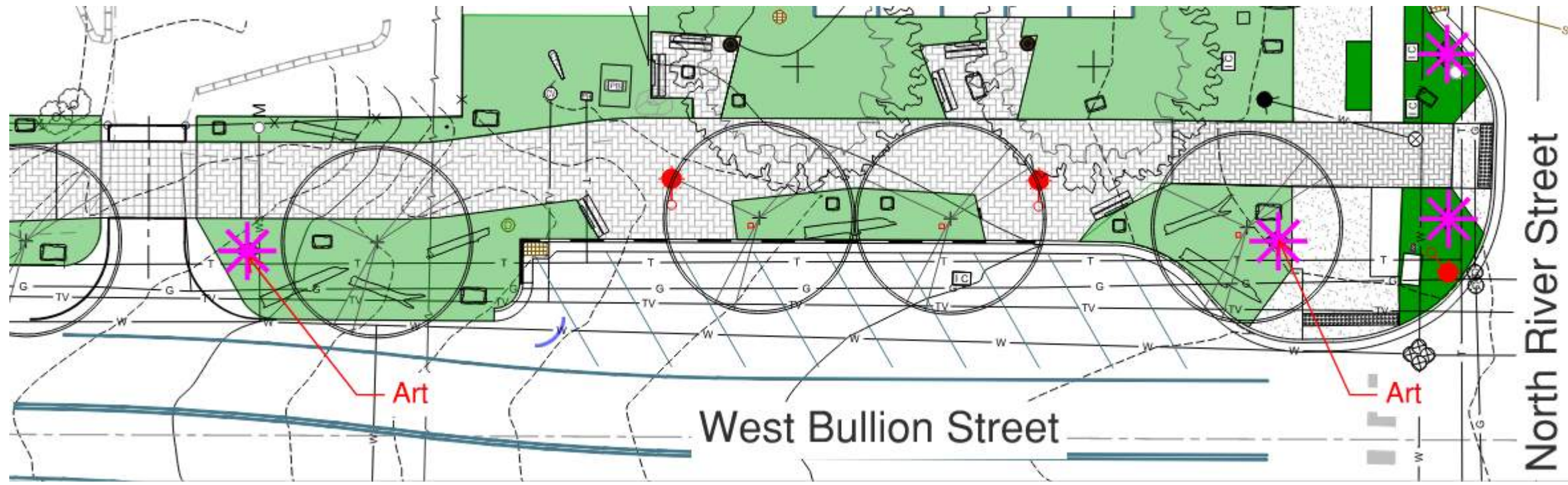
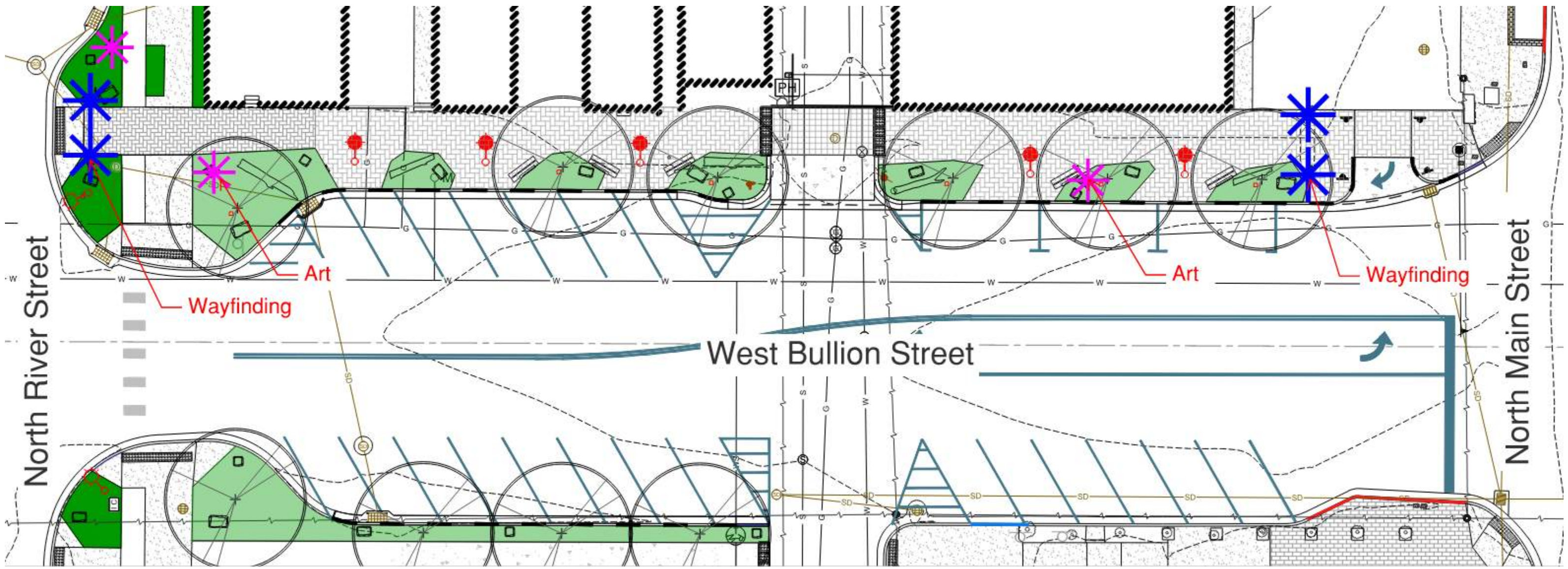
**Prices valid for 30 days. 10 days notice required for delivery. Bid does not ensure availability. Trees shipped Apr 15 - Oct 15 may incur extra charges.**

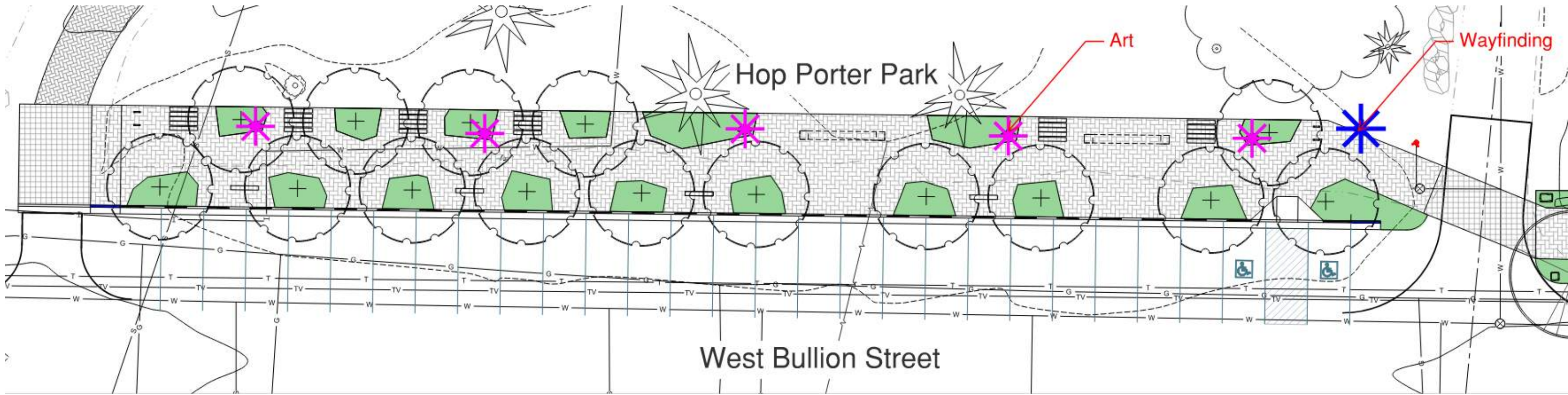
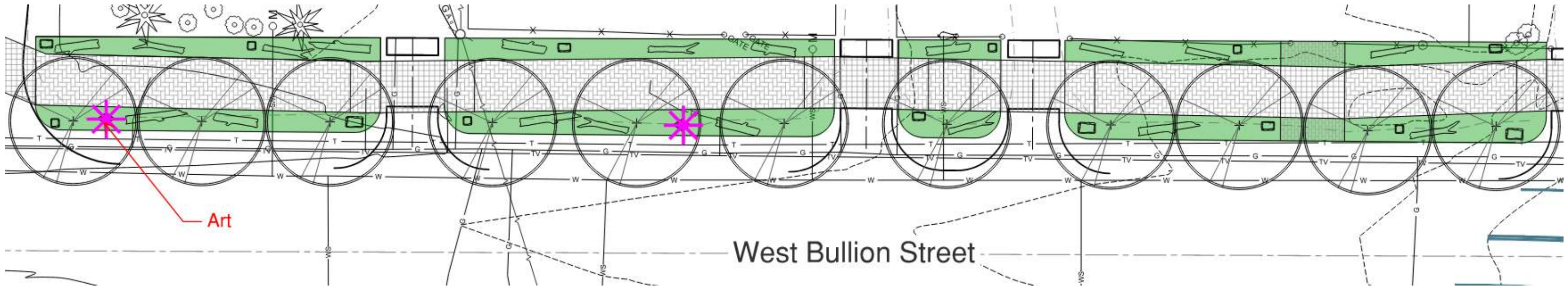
QTY	SIZE	VARIETY	PRICE	EXT. PRICE	NOTES
20	3"	ULMUS AMERICANA 'PRINCETON'	550.00	11,000.00	
5	4.5"	QUERCUS BICOLOR	900.00	4,500.00	
34	3"	GLEDITSIA TRIACANTHOS SKYLINE®	550.00	18,700.00	
3	4.5"	QUERCUS MACROCARPA	900.00	2,700.00	
38		Hold Fees April - Sept	60.00	2,280.00	\$10/tree/Month
		Shipping			Included





## Wayfinding & Art







**Budget**

# ESTIMATED PROJECT TIMELINE

The Bullion Pathway placemaking, wayfinding, and public art program will progress in coordination with the City's broader design and construction schedule. Current planning assumptions include:

- **Phase 1 — Creative Consultation & Early Direction:** In progress ( Dec. 2025-January 2026)
- **Phase 2 — Design Development & Refinement:** February–March 2026
- **Phase 3 — Final Development & Fabrication Planning:** April 2026
- **Fabrication & Installation:** Anticipated early summer–fall 2026, subject to City approval, funding authorization, site readiness, priorities, and seasonal considerations



Comparable works from Trademark Creative

## Bullion Pathway | Project & Budgetary Overview

### Project Budget Context

The Bullion Pathway placemaking, wayfinding, and public art program is anticipated to have an overall project budget of approximately **\$225,000**, inclusive of design, engineering, fabrication, and installation. This figure reflects current planning assumptions and will be refined as design development progresses and priorities are confirmed with the City of Hailey and project partners

### Planning-Level Budget Matrix

This matrix is intended for planning and discussion purposes and will evolve as concepts, priorities, and funding are refined.

CATEGORY	APPROX. BUDGET	SCOPE SUMMARY
Wayfinding & Signage	\$75,000	Primary wayfinding and identity elements at key gateway locations, including Main Street, River Street, and Hop Porter Park. Additional secondary and tertiary wayfinding elements may be evaluated in later phases to improve continuity and overall user experience along the corridor.
Art & Placemaking	\$150,000	A layered placemaking approach including <b>(1)</b> primary feature art element (initially focused near 1st Street) and approximately <b>(5)</b> secondary placemaking elements distributed along the corridor. Additional interpretive, experiential, or functional placemaking elements may be considered.

### Trademark Creative Studio — Typical Cost Structure

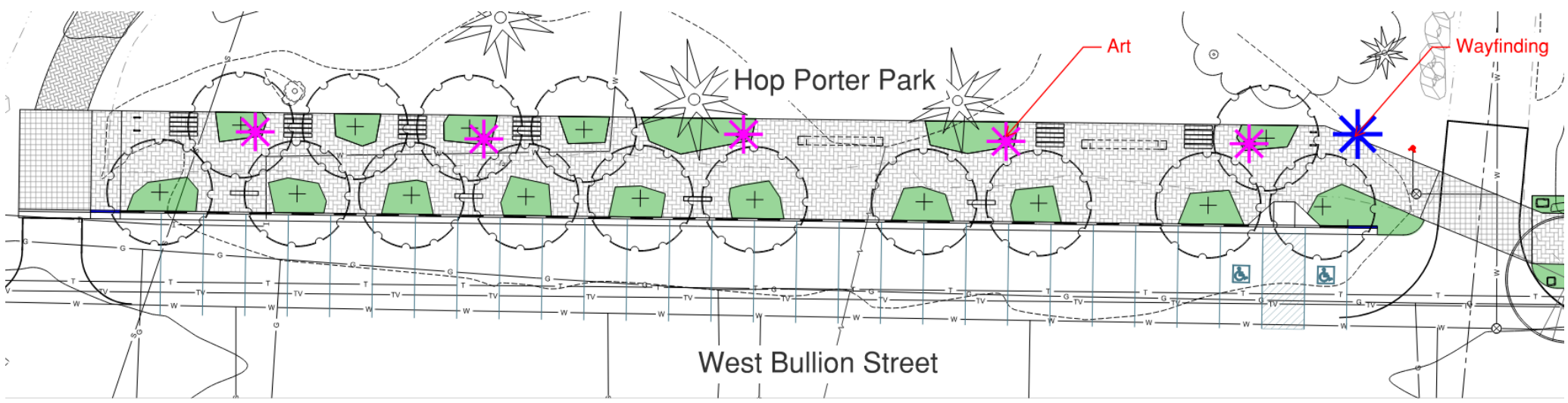
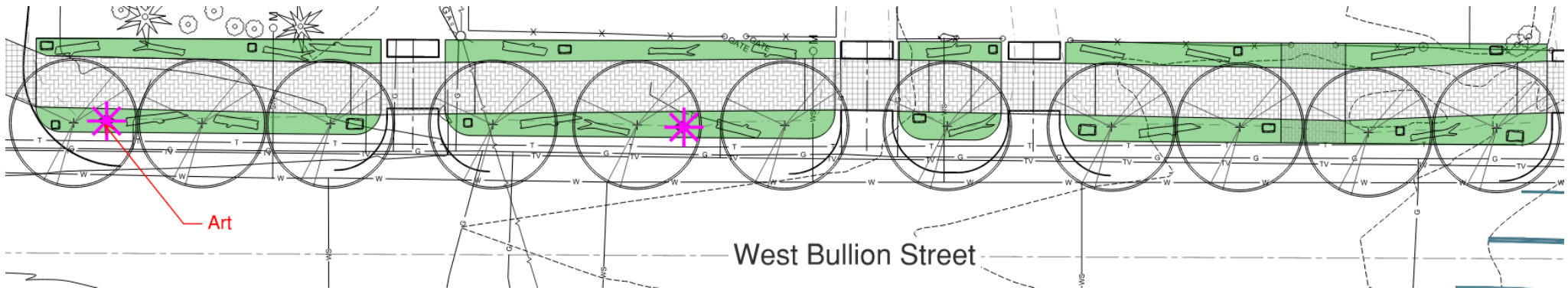
For placemaking, wayfinding, and public art projects of this scale, overall project costs are typically distributed as follows, shown here with approximate dollar values based on a **\$225,000 total** project budget:

CATEGORY	TYPICAL ALLOCATION	APPROX. \$
Consultation & Early Coordination	~5%	~\$11,000
Project Management	~10%	~\$22,500
Preliminary Design	~10%	~\$22,500
Design Development	~15%	~\$34,000
Fabrication	~50%	~\$112,500
Installation	~10%	~\$22,500

# Bullion Pathway Documentation for Construction Update | HURA Meeting

January 20 2026







**Budget**

**Bullion Pathway | Project & Budgetary Overview**

**Project Budget Context**

The Bullion Pathway placemaking, wayfinding, and public art program is anticipated to have an overall project budget of approximately **\$225,000**, inclusive of design, engineering, fabrication, and installation. This figure reflects current planning assumptions and will be refined as design development progresses and priorities are confirmed with the City of Hailey and project partners

**Planning-Level Budget Matrix**

*This matrix is intended for planning and discussion purposes and will evolve as concepts, priorities, and funding are refined.*

CATEGORY	APPROX. BUDGET	SCOPE SUMMARY
<b>Wayfinding &amp; Signage</b>	\$75,000	Primary wayfinding and identity elements at key gateway locations, including Main Street, River Street, and Hop Porter Park. Additional secondary and tertiary wayfinding elements may be evaluated in later phases to improve continuity and overall user experience along the corridor.
<b>Art &amp; Placemaking</b>	\$150,000	A layered placemaking approach including <b>(1)</b> primary feature art element (initially focused near 1st Street) and approximately <b>(5)</b> secondary placemaking elements distributed along the corridor. Additional interpretive, experiential, or functional placemaking elements may be considered.

**Trademark Creative Studio — Typical Cost Structure**

For placemaking, wayfinding, and public art projects of this scale, overall project costs are typically distributed as follows, shown here with approximate dollar values based on a **\$225,000 total** project budget:

CATEGORY	TYPICAL ALLOCATION	APPROX. \$
<b>Consultation &amp; Early Coordination</b>	~5%	~\$11,000
<b>Project Management</b>	~10%	~\$22,500
<b>Preliminary Design</b>	~10%	~\$22,500
<b>Design Development</b>	~15%	~\$34,000
<b>Fabrication</b>	~50%	~\$112,500
<b>Installation</b>	~10%	~\$22,500

# Bullion Pathway Documentation for Construction Update | HURA Meeting

January 20 2026

